

"ANNIKA" JERSEY

MEMPHIS Yarn



YARN
ADRIAFIL YARN

MATERIALS REQUIRED

- 450 gr. Memphis yarn in dove grey no. 27
- knitting needles no. 4 and 4 1/2
- 2 two-tip auxiliary needle
- 1 brown "stiletto" button
- tapestry needle

SIZE: 40 (42-44)

PATTERN STITCHES

Elastic rib (beg. and ending)

K1/p1 rib stitch

K2/p2 rib stitch

English rib stitch (work over an uneven number of sts.):

Row 1: k1, * 1 double st. (= k1 pointing the right needle in the st. to work but of the row below), k1 *, rep. from * to *.

Row 2: * 1 double st., k1 *, rep. from * to *, 1 double st.

Row 3: rep. from row 1

Cable A (work over 15 sts.):

Rows 1, 3 and Row 5: in k1/p1 rib st. starting with k1

Row 2 and all next even rows: work sts. as they stand.

Row 7: 15 sts. incr. rightwise (= stand off 7 sts on auxiliary needle at back of work, stand off next st. on second auxiliary needle at back of work, work the next 7 sts. as they stand, pick up and purl the standing st., pick up the 7 standing sts. and work in k1/p1 rib st.).

Rows 9, 11 and row 13: work sts. as they stand.

Row 15: rep. from row 1

Cable B (work over 17 sts.):

Rows 1, 3, 5, 7, 9 and row 11: in k1/p1 rib st. starting with k1

Row 2 and all next even rows: work sts. as they stand.

Row 13: 17 sts. incr. rightwise (= stand off 6 sts. on auxiliary needle at back of work, work the next 11 sts. as they stand, take the auxiliary needle and rotate from right to left and work sts. as they stand.).

Rows 15, 17 and row 19: work sts. as they stand.

Row 21: rep. from row 1

Lace stitch A (work over 5 sts.):

Row 1: purl.

Row 2 and all next even rows: knit stitch.

Row 3: p3, 1 yo., p2 tog.

Row 5: purl.

Row 7: p2 tog., 1 yo., p3

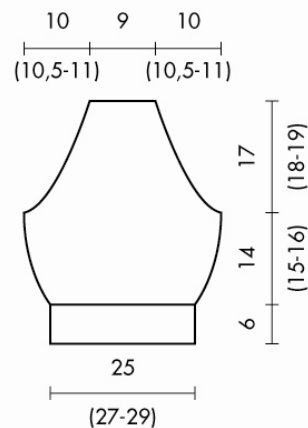
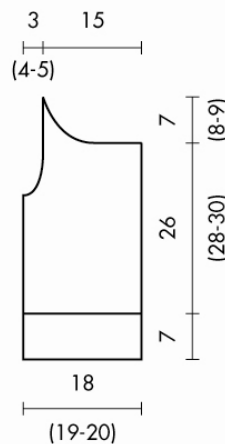
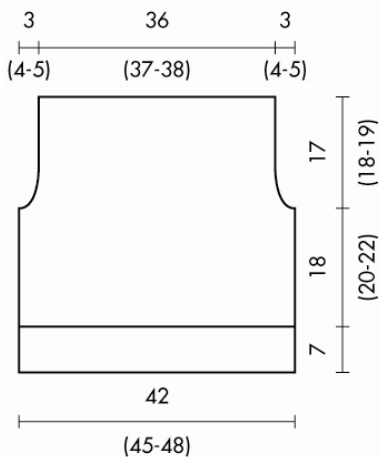
Row 9: rep. from row 1°

Lace stitch B (work over 5 sts.):

Row 1: purl.

Row 2 and all next even rows: knit stitch.

Row 3: p2 tog., 1 yo., p3



Row 5: purl.

Row 7: p3, 1 yo., p2 tog.

Row 9: rep. from row 1°

Diamond st. (work over 24 sts.): follow the chart taking into account the following:

- cross 4 sts. leftwise: stand off 3 sts. on auxiliary needle on front of work, p1, knit up standing sts.
- cross 4 sts

rightwise: stand off 1 st. on auxiliary needle at back of work, k3, purl the standing st.
 - cross 6 sts. rightwise: stand off 3 sts. on auxiliary needle back of work, k3, knit up standing sts.
 Work in knit st. to end the elastic rib.

GAUGE

10x10 cm. working with knitting needles no. 4 1/2 and in the different stitches = 29 sts. and 32 rows.

WORKING INSTRUCTIONS

Back: with knitting needles no. 4 cast on 122 (132-142) sts. and, for the border, work 4 rows in elastic rib, then, cont. in 2k/p2 rib st. When work measures a total of 7 cm., cont. with knitting needles no. 4 1/2, decr. 1 st. at the centre, over the first row, and establish the sts. as follows: (for size 42 start with 1 edge st.) 9 (13-19) sts. in English rib, (15 sts for cable A, 7 sts. in English rib) 5 times and ending with 2 (6-12) sts. in English rib (for size 42 ending with 1 edge st.). When work measures 18 (20-22) cm. from border, to shape the sleeve holes cross off at ends 4 (5-6) sts, then decr., inside 1 st., 1 st. every 2 rows 4 (6-8) times. When work measures 17 (18-19) cm. from beg. of sleeve holes, bind off the 105 (109-113) rem. stitches.

Right front: with knitting needles no. 4 cast on 50 (54-58) sts. and work the border in same way as back. When work measures a total of 7 cm., cont. with knitting needles no. 4 1/2, increasing 3 (2-1) sts. spaced evenly over row 1 and establish the sts. as follows: (7 sts. in English rib, 15 sts for cable A) twice and ending with 9 (11-15) sts. in English rib (for size 42 ending with 1 edge st.). When work measures 18 (20-22) cm. from border shape the sleeve hole, on left of work, in same way as back. When work measures 26 (28-30) cm. from border, to shape the neckline cross off on right of work, every 2 rows, 22 sts, 7 sts, 3 sts 3 times, 2 sts., 1 st. 5 (4-4) times (for size 42 decr. the last st. after row 4 - for size 44 decr. the last st. after row 6).

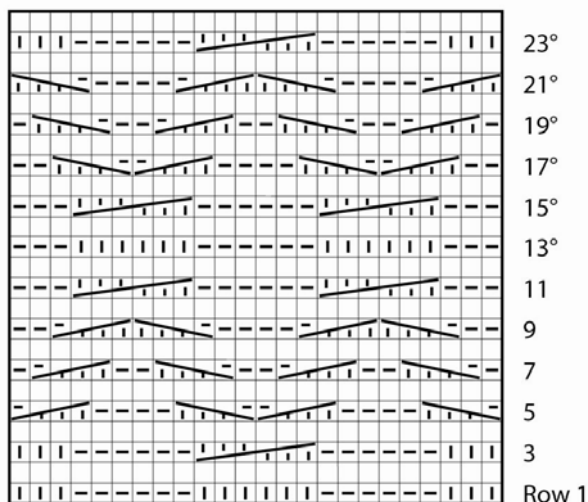
Left front: work to match right front.





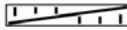

Sleeves: with knitting needles no. 4 cast on 82 (86-90) sts. and, for the border, work 4 rows in elastic rib, then, cont. in 2k/p2 rib st. When work measures a total of 6 cm., cont. with knitting needles no. 4 1/2, decr. 8 sts. spaced evenly over row 1 and establish the sts. as follows: (for size 42 start with 2 edge sts.) 4 (4-8) sts. in lace st. A, 17 sts for cable B, 4 sts for lace st. B, 24 sts for the diamond st., 4 sts for lace st. A, 17 sts for cable B, 4 (4-8) sts for lace st. B (for size 42 ending with 2 edge sts.). At ends incr. 1 st. every 6 rows 5 times and work these new sts. in lace st. A on right of work, in lace st. B on left of work. When work measures 14 (15-16) cm. from border, to shape the sleeve holes cross off at ends 4 sts., then decr., inside 1 st., 1 st. every 2 rows 25 (27-29) times. When work measures 17 (18-19) cm. from beg. of sleeve holes, bind off the 26 rem. stitches.

MAKE UP AND FINISH

With knitting needles no. 4 pick up 98 (102-106) sts. along the buttonhole side of the right front and work in 2k/p2 rib st. for 4.5, cont. in elastic rib for 4 rows, then bind the sts. with the tapestry needle. Trim in the same way the buttonhole side of the left front. Sew up the sleeve holes. With knitting needles no. 4 pick up 218 (226-234) sts. along the back and front neckline, including the sides of the borders worked, and work in 2k/p2 rib st.; when work measures a total of 2.5 cm., make 1 buttonhole inside the first 6 sts. When work measures a total of 4.5 cm. work 4 rows in elastic rib, then bind the sts. with the tapestry needle. Sew up the seams from cuff to side. Sew the button on the collar of the left front, opposite the buttonhole.

DIAMOND STITCH
 Row 25: rep. from row 1



-  = k1
 -  = p1
 -  = cross 4 sts. leftwise
 -  = cross 4 sts. rightwise
 -  = cross 6 sts. leftwise
 -  = work 1 st. as it stands
- Each square corresponds to 1 st. and 1 row

24 sts.