



"AVORIO" WAISTCOAT

yarn **MEMPHIS**

YARNS

ADRIAFIL YARNS

MATERIALS

- 150 g. **Memphis** yarn in cream no. 11 and 50 g. of the same yarn in each of the following colours: lilac no. 30, pearl grey no. 29 and orange no. 70

- knitting needles no. 41/2
- tapestry needle

AGE: 8 years

PATTERN STITCHES

K3/p1 rib stitch (p3, k1, in columns)

Knitted stitch

Dovetail pattern: work in knit st. following the chart; use 1 ball of yarn for each different coloured section and cross the yarns together, on back of work, at every colour change to prevent making holes.

GAUGE

10 x 10 cm. worked with knitting needles no. 41/2 in knit st. = 20 sts. and 27 rows.

WORKING INSTRUCTIONS

Back: With the cream yarn cast on 83 sts. and, for the border, work 8 rows in k3/p1 rib st., equal to 2.5 cm. Cont. in knit st. alternating the colours as follows: 6 rows in the cream yarn, 6 rows in the lilac yarn, 2 rows in the cream yarn, 4 rows in the pearl grey yarn, 4 rows in the orange yarn, 8 rows in the cream yarn, 2 rows in the lilac yarn, 4 rows in the orange yarn, 2 rows in the cream yarn, 6 rows in the pearl grey yarn, 2 rows in the orange yarn, 2 rows in the lilac yarn, 10 rows in the cream yarn, 4 rows in the lilac yarn, 4 rows in the pearl grey yarn, 2 rows in the orange yarn, 2 rows in the cream yarn, 2 rows in the lilac yarn, 6 rows in the cream yarn, 2 rows in the pearl grey yarn, 4 rows in the orange yarn, 2 rows in the lilac yarn, 4 rows in the cream yarn, 2 rows in the orange yarn, 2 rows in the pearl grey yarn, then end with the cream yarn. When work measures a total of 36 cm. from border cast off all the rem. sts.

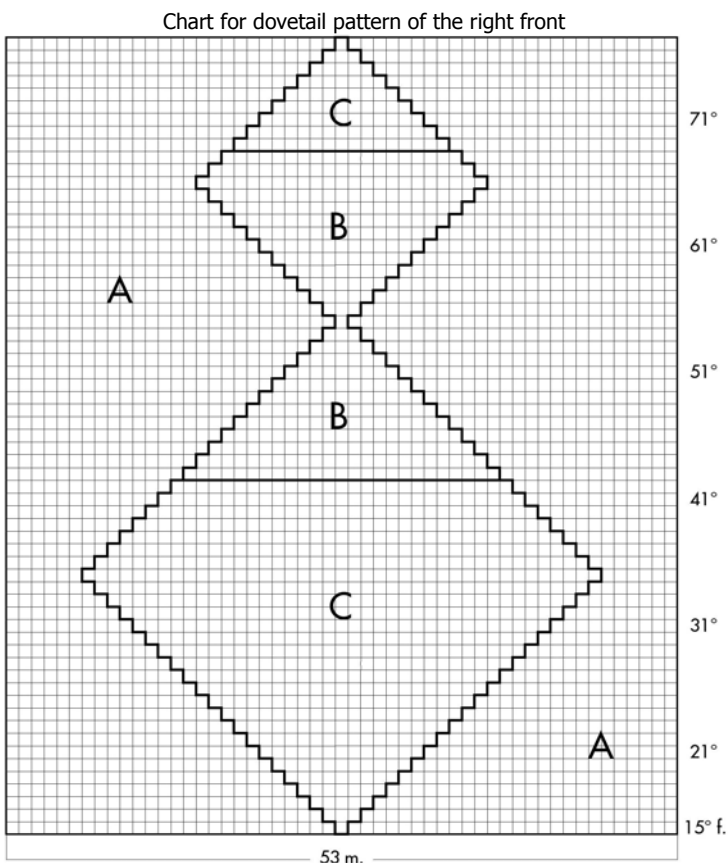
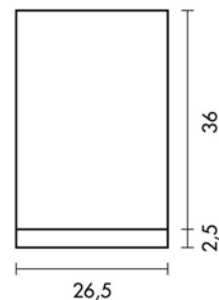
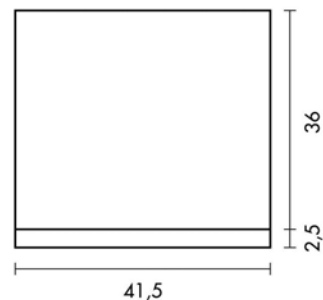
Right front: with the cream yarn cast on 51 sts. and work the border in same way as back. Cont. in knit st. increasing 2 sts. over the first row. After 14 rows, cont. with the dovetail pattern following the chart. At end the chart end in knit st. with the cream yarn. When work measures a total of 36 cm. from border cross off all the sts..

Left front: cast on the sts. and work the border in same way as back. Cont. in knit st. increasing 2 sts. over the first row. and alternating the colours as follows: 6 rows in the cream yarn, 4 rows in the lilac yarn, 2 rows in the cream yarn, 4 rows in the pearl grey yarn, 6 rows in the cream yarn, 4 rows in the orange yarn, 2 rows in the lilac yarn, 2 rows in the cream yarn, 2 rows in the pearl grey yarn, 2 rows in the orange yarn, 4 rows in the cream yarn, 8 rows in the lilac yarn, 2 rows in the cream yarn, 4 rows in the pearl grey yarn, 2 rows in the orange yarn, 2 rows in the lilac yarn, 8 rows in the cream yarn, 2 rows in the orange yarn, 6 rows in the pearl grey yarn, 2 rows in the cream yarn, 4 rows in the lilac yarn, 6 rows in the orange yarn, 2 rows in the lilac yarn, then end with the cream yarn. When work measures a total of 36 from border cross off all the sts..

MAKE UP AND FINISH

Sew up the shoulders as follows: along the shoulder of the right front make two 3 cm. pleats turned leftwise, in order to reduce the width of the shoulder to about 14 cm. Prepare in same way 2 pleats turned rightwise along the shoulder of the left front. Sew up the shoulder. Sew up the sides for a length of 7 cm. (starting from the bottom). Overlap the waistband of the left front by 7 cm. over the waistband of the right front, sewing the edges together in order to join the two fronts.

- A Cream
- B Lilac
- C Orange



Each square corresponds to 1 st. and 1 row.