

PAG. 6 PULL "BERNINI"



YARN ADRIAFIL YARNS

MATERIALS

- 450 g. **Relax** yarn in pink 71
- knitting needles no. 41/2
- two-tip knitting needles
- tapestry needle

SIZE: 40 (42-44)

PATTERN STITCHES

- Knit stitch
- Purl stitch
- K3/P1 rib stitch (k3, p1, in a column)
- Rice stitch
- Twist stitch (work over 24 sts): follow the chart.

GAUGE

10 x 10 cm working the different stitches with the knitting needles 41/2 = 23 sts. and 23 rows
 10 x 10 cm worked K3/K1 rib stitch with knitting needles 41/2 = 23 sts. and 23 rows.

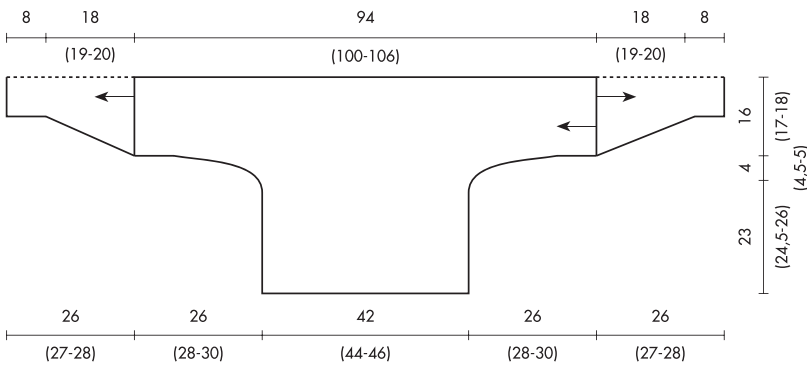
WORKING INSTRUCTIONS

Back, right sleeve and left sleeve: work as one piece starting from right sleeve. Cast on 38 (40-42) sts. and work: k2 (3-4), p3, k2, p5, 24 sts for the Twist st. starting from row 5 (3 - 1) of the chart, p2 (3-4). For the section below the sleeve, inc. leftwise 1 st. every 10 rows 5 times, 1 st. after 6 rows, 1 st. every 2 rows 2 (3-4) times, 2 sts after 2 rows, then cast-on another 52 (56-60) sts on the same side to work the right side; on these new stitches work, work as follows as you work: p3, (k2, p3) 3 times, p2, 24 sts for the Twist st. starting from row 1 of the chart, p5, k2, p(4-5), k2 (3-4), p6 (9-12). Cont as established and when work measures 42 (44-46) cm from right side, to close the left side and the section below the left sleeve cross off leftwise 52 (56-60) sts, 2 sts after 2 rows, then dec. 1 st. every 2 rows 2 (3-4) times, 1 st. after 6 rows, 1 st. every 10 rows 5 times. When work measures 26 (28-30) cm from closed section of the left side cross off the 38 (40-42) rem. stitches.

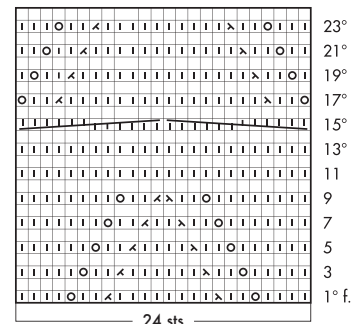
Front, right sleeve and left sleeve: work in the same way as back, but starting from left sleeve.

MAKE UP AND FINISH

Sew up the top section of a sleeve and the shoulder for 30 (32-34) cm. Pick up 144 (152-160) sts. along the 34 (36-38) cm along the front neckline and back; work in Rice stitch for 2 rows, then cross off the stitches. Sew the other shoulder and the top section of the sleeve. Pick up 61 (65-69) sts at the bottom of a sleeve and, for the cuff, work in k3/p1 rib stitch starting with p1; at ends dec. 1 st. every 6 rows twice, 1 st. every 8 rows 4 times. Cont. without changes until work measures a total of 26 (27-28) cm. from the cuff, then cross off the 49 (53-57) rem. stitches. Work the other cuff in the same way. Sew up the side seams.



Twist stitch
Row 25: rep. from row 1



- = k1
- = p1
- ⊙ = 1yo
- ⊗ = knit 1, slip 1 pass slipped stitch
- ⊘ = k2 tog.

Each square corresponds to 1 st and 1 row