

PAG 22 CARDIGAN "RENOIR"



YARN ADRIAFIL YARNS

MATERIALS

- A total of 450 g **Mirage** yarn subdivided into the following colours: 250 g cream 11, 100 g light mélange grey 51 and 100 g dark mélange grey 52
- knitting needles no. 5
- tapestry needle
- white 52 cm zipper

SIZE: 42 (44-46)

PATTERN STITCHES

Elastic rib (beg. and finish)

Knit stitch

Jacquard stitch: follow the chart.

Two-colour diamond stitch (work over a multiple of 8 + 7): follow the chart.

Knit stitch for the finish of the elastic rib

GAUGE

10 x 10 cm worked in jacquard st. and two-colour diamond st. with knitting needles 5 = 21 m and 22 rows

WORKING INSTRUCTIONS

Back: with the cream yarn cast on 99 (103-107) sts. and work, for the edge, 4 rows in elastic rib, equal to 0.5 cm. Cont alternating the stitches as follows: 34 rows in jacquard st. starting and ending the row with 2 (4-6) sts in knit st with the cream yarn, 2 rows in knit st with the cream yarn, * 26 rows two-colour st. with the cream and dark grey yarn (for the other sizes work at ends 2-4 edge sts.), 2 rows knit st with the cream yarn *, 26 rows in two-colour st. with the cream yarn and the light grey (for the other sizes work at ends 2-4 edge sts.), 2 rows in knit st with the cream yarn, rep. from * to * once. At the same time, when work measures 38 (40-42) cm. from edge, to shape the armholes cross off at ends,

every 2 rows, 4 sts, 2 sts, 1 st 5 times. When work measures 16 (17-18) sts from beg. of the armholes, to slant the shoulders cross off at ends, every 2 rows, 10 (11-12) sts., 17 sts decreasing 2 sts spaced evenly when you cross off (to work dec. work k2 tog. before crossing off). When work measures 17 (18-19) cm. from beg. of the armholes cross off the 23 (25-27) centre sts to shape the neckline decreasing 2 sts spaced evenly before crossing off.

Right front: with the cream yarn cast on 49 (51-53) sts. and work the edge in same way as back. Cont. alternating the stitches as follows: 34 rows in jacquard st. starting and ending the rows with 2 (3-4) edge st. and starting the jacquard stitch work from the point indicated by the chart, 2 rows in knit st with the cream yarn, * 26 rows in two-colour st. with the cream yarn and the dark grey (for the other sizes work at ends 1-2 edge sts.), 2 rows in knit st with the cream yarn *, 26 rows in two-colour st. with the cream yarn and the light grey (for the other sizes work at ends 1-2 edge st.), 2 rows in knit st with the cream yarn, rep. from * to * once. At the same time, when work measures 38 (40-42) cm. from edge, work the armhole leftwise in same way as back. When work measures 47 (50-53) cm. from edge, to shape the neckline cross off on right, every 2 rows, 6 (7-8) sts, 3 sts, 1 st 4 times. When work measures 16 (17-18) cm. from beg. of armhole, to slant the shoulder cross off leftwise, every 2 rows, 10 (11-12) sts, 15 sts

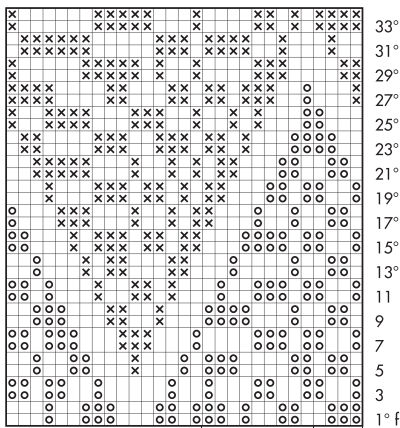
Left front: work to match the right front, following the chart from the 1st stitch.

Sleeves: with the cream yarn cast on 45 (47-49) sts. and work the edge in same way as back. Cont alternating the stitches as follows: 34 rows in jacquard st. starting from the point indicated by the chart (for the other sizes work at ends 1-2 edge st.), 2 rows in knit st with the cream yarn, 26 rows in two-colour st. with the cream yarn and the dark grey (for the other sizes work at ends 1-2 edge st.), 2 rows in knit st with the cream yarn, 26 rows in two-colour st. with the cream yarn and the light grey, 2 rows in knit st with the cream yarn, 20 f. two-colour st. the cream yarn and the dark grey. At the same time, at the beg. of work in jacquard st., inc. at ends 1 st. every 8 rows 10 times. When work measures 38 (39-40) cm. from edge, to shape the armholes cross off at ends, every 2 rows, 5 sts, 3 sts, then dec., inside 1 edge st., 1 st 11 (12-13) times. When work measures 14 (15-16) cm. from beg. of the armholes, cross off the 27 rem. stitches decreasing 8 m. spaced evenly when you cross off stitches.

MAKE UP AND FINISH

With the cream yarn pick up 100 (104-108) sts along the opening of each front and work 6 rows in elastic rib. Sew over the stitches. Sew up the shoulder. With the cream yarn pick up 80 (82-84) st around the neckline and along the edges of the elastic rib border and work 1 row in knit st, 9 rows in two-colour st. with the cream yarn and the dark grey, 4 rows in elastic rib with the cream yarn. Sew over the stitches. Sew on the zipper in the edge of the elastic rib. Sew up the sides. End and join on the sleeves.

Chart for jacquard pattern
motif to repeat



Knit stitch

□ = cream

⊗ = light mélange grey

⊙ = dark mélange grey

Each square corresponds to 1 st and 1 row

