



YARN
ADRIA FIL YARNS

MATERIALS

400 g **Spice** yarn in pistachio green no. 34
Crochet hook N° 5.00
Tapestry Needle
Embroidery needle
1 Large green button

SIZE: 42/44

PATTERN STITCHES

Chain stitch
Single crochet
Double crochet
Treble stitch
Double treble stitch
Fancy stitch (work over a multiple of 3 + 2):

Row 1: 1 double tr (replace the first double tr of the row with 4 chs), skip 1 st., * in next stitch work 2 double trs separated by 1 chain, skip 2 sts. *, rep. from * to * over all the row ending with 2 double trs separated by 1 chain in next stitch, skip 1 st., 1 double tr in the last stitch

Row 2: 1 double tr in the double treble, * in the 1 chain arch between the group of the next 2 double trs work 2 double trs separated by 1 chain *, rep. from * to * over all the row ending with 1 double tr in the last stitch

From row 3: repeat row 2.

Cable loop stitch

GAUGES

10x10 cm with crochet hook N° 5.00 in fancy stitch = 19 sts. and 7 rows
The diamond has sides of 9.5 cm and measures approximately 13 cm from one corner to the other.

WORKING INSTRUCTIONS

Back: cast on a chain of 92 sts. and work in fancy stitch. When work measures 29 cm. decr. at ends 1 st every row 8 times. When work measures 44 cm., to work the centre opening divide the work in half and work 4 rows in treble over the first 38 sts decreasing 6 sts. in row 1. Break off and bind the yarn. Pick up work over the 38 rem. stitches and work as described for first part. Break off and bind the yarn.

Diamond: cast on a chain of 8 sts. and end with a 1 sc loop Cont. following the chart. Complete the chart then break off and bind the yarn.

Front: start with the diamonds.

Work diamond 1 in full.

Work diamond 2 and in the last row in dc, when you reach the 2 chain arch in a corner, work as follows: 1 sc, working tog. the corresponding dc of the first diamond and the chain of the arch, 1 sc working tog. the next dc of the first diamond and the next chain of the arch, 1 sc working together the next dc of the first diamond and the next stitch of the diamond you are working. Complete the row of the diamond in dc.

Work diamond 3 and join it to diamond 2 as indicated for the first 2.

Work diamond 4, but at the end of row 4 break off and bind the yarn.

Pick up work on the 2 bottom edges of the diamond and work 1 row in dc as shown by chart, joining this to the prev. diamond. For the front, cast on a chain of 92 sts. and work 1 row in fancy stitch then, when you work the 4 centre sts, join to the 4 centre sts of the bottom corner of diamond 1 as follows: before closing the double treble, fit hook into the stitch if the diamond you are joining, throw yarn on hook and work tog. all the stitches.

At end of row 1 cont. work separately on the two ends of the row of diamonds (44 sts per side, excluding the 4 centre sts joined to the diamond) working in fancy stitch and joining the ends of the diamond as indicated by the chart (for odd rows when you work the last double treble joined to the diamond, fit hook to dc of the diamond before placing yarn over on hook.).

When work measures 29 cm., decr. at ends 1 st. every row 8 times. When work measures 44 cm., to work the left cup, work 1 row as follows: work 25 trs in the stitch on the right of the centre diamond, 1 tr in the second last stitch before the corner chain of the diamond, 3 trs tog. in the next 3 stitches of chain, 20 trs in the next 18 stitches (incr. 2 sts), 1 tr in the next arch, turn work over. Cont. in tr decreasing 2 trs every row 11 times, forming columns with the prev., and 1 stitch at ends every 2 rows 4 times. After 12 rows, cont. decreasing 2 sts every 2 rows 5 times, forming columns with the prev., and 1 stitch on left of work every 2 rows 3 times. Once you have worked a total of 22 rows for the first half of the shoulder cont. over the 5 remaining sts and work 15 rows in treble. Break off and bind the yarn. To work the right cup, pick up work on left of the centre diamond and work 1 tr in the centre arch (the same arch in which you worked the last treble of the left cup), 20 sts. in the next 18 sts. (incr. 2 sts.), work 3 tr tog. in the next 2 stitches or chain, 1 tr in next stitch of the diamond, 25 trs in the 25 trs on left of centre diamond. Cont. working to match the left cup.

MAKING UP AND FINISH

Sew up the ends of the shoulders. Sew up the left side. Sew the right side leaving the first 20 rows open from the bottom. Trim the bottom and the side split with 1 row in dc. Break off and bind the yarn. Trim in the same way the neckline, the outer edge of the shoulder, the sides of the cups, the upper edge of back and the sides of the opening.

With the sewing needle, make the buttonhole on the left opening of the back taking the yarn from the treble of the last row to the treble of the second last row, twice, then work over the arch in cable loop stitch. Sew on the button in front of the buttonhole.

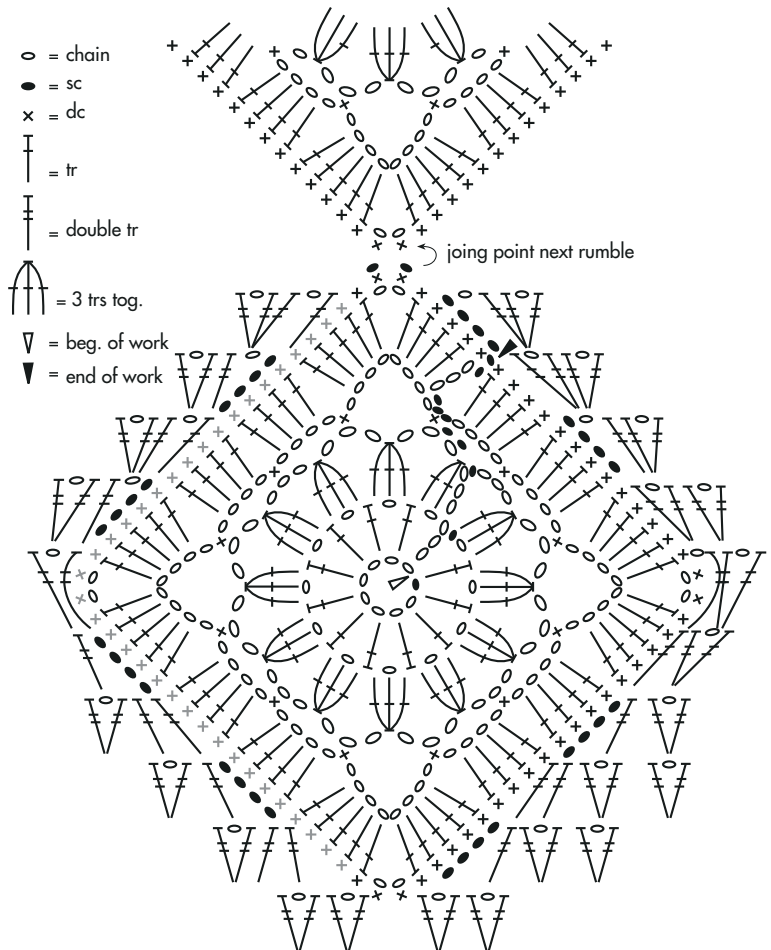
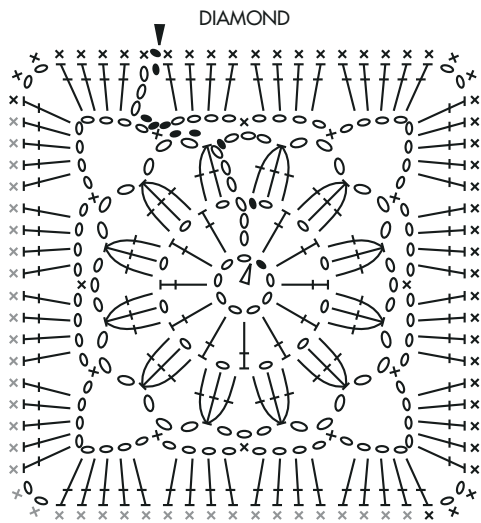


DIAGRAM OF THE RUMBLE AND UNION TO THE POINT FANTASY



- = chain
- = sc
- × = dc
- ┆ = tr
- ┆┆ = beg. of work
- ▼ = end of work

