

PAG. 18 JACKET "ANTIGUA"



YARN
ADRIAFIL YARNS

MATERIALS
350 G Van Gogh yarn in colour no. 85
Crochet hook N° 5.00
Tapestry Needle

SIZE: 42

PATTERN STITCHES

Chain stitch
Single crochet
Double crochet
Treble stitch

GAUGE

The hexagon worked with Crochet Hook N° 5.00 measures 14x14 cm.

WORKING INSTRUCTIONS

The jacket consists of 26 hexagons, 14 of which are for the front, 14 for the back and 6 for each sleeve, 2 half hexagons "A", 2 half hexagons "B" and 4 motifs for the sleeves (2 for each sleeve).

Hexagon: cast on a chain of 7 sts. and close with a 1 sc loop. Cont. following the chart and, at the end of chart, break off and bind the yarn. Work another 25 hexagons in same way.

Half hexagon "A": cast on a chain of 7 sts. and close with a 1 sc loop. Cont. following the chart and, at the end of chart, break off and bind the yarn. Work the second half hexagon in same way.

Half hexagon "B": cast on a chain of 7 sts. and close with a 1 sc loop. Cont. following the chart and, at the end of chart, break off and bind the yarn. Work the second half hexagon in same way.

Motif: cast on a chain of 7 sts. and close with a 1 sc loop. Cont. following the chart and, at the end of chart, break off and bind the yarn. Work another 3 motifs in the same way.

MAKING UP AND FINISH

Following drawing, first sew on the hexagons and motifs making up the sleeves (on the seams of the hexagons and motifs sew only the parts in dc leaving all the arches free), sew the under section of the sleeves for a length corresponding to two hexagons, then sew all the other hexagons and half hexagons, following the drawings. Sew up the shoulders.

Trim all the edges of the jacket as follows:

Row 1: Pick up work around the edge of the jacket and work 1 dc in every st. and in every chain of the arches, end this row and all the next rows with 1 sc in the starting row.

Row 2: * 8 dcs in the next 8 stitches, (3 chs., skip 1 stitch, 1 dc in next stitch) twice, 3 chs., skip 1 stitch *, rep. from * to * for all the row

Row 3: 1 sc, * 6 dcs in the next 6 dcs, (3 chs., 1 dc in next arch) 3 times, 3 chs., skip 1 dc *, rep. from * to * for all the row

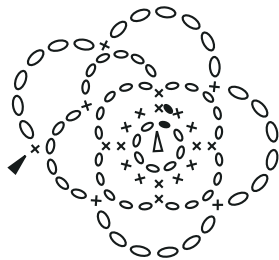
Row 4: 1 sc, * 4 dcs. in the next 5 dcs, (3 chs., 1 dc in next arch) 4 times, 3 chs., skip 1 dc *, rep. from * to * for all the row

Row 5: 1 sc, * 2 trs in the next 2 trs, (3 chs., 1 dc in next arch) 5 times, 3 chs., skip 1 dc *, rep. from * to * for all the row
Break off and bind the yarn.

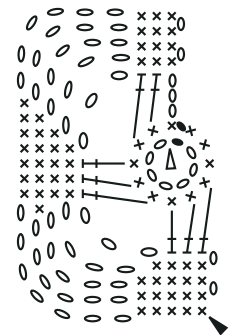
Trim the bottom of each sleeve in way described for prev. border.

Work two 46 cm chains. Sew the chains to the fronts, at the bottom of the 2nd hexagon and secure them at the other end with a knot.

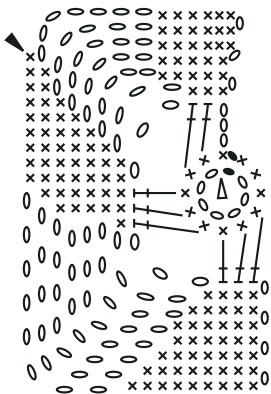
MOTIF



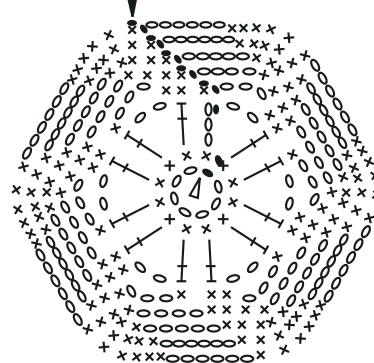
HALF HEXAGON "B"



HALF HEXAGON "A"

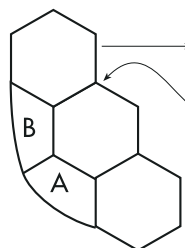


HEXAGON



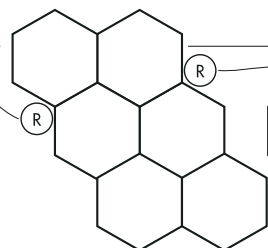
- o = chain
- = sc
- x = dc
- ⋈ = tr
- ∇ = beg. of work
- ▼ = end of work

LEFT FRONT



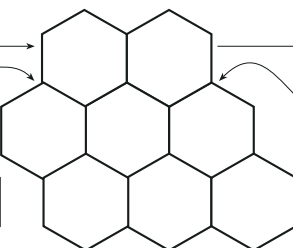
28

LEFT SLEEVE



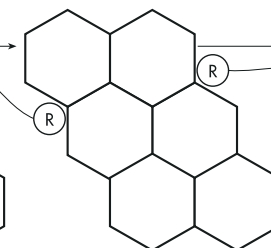
28

BACK



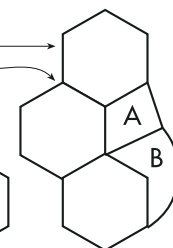
42

RIGHT SLEEVE



28

RIGHT FRONT



14

42