

JACKET "NARCISO"

yarn *MATISSE*

MATERIAL ADRIAFIL YARNS

MATERIALS REQUIRED

250 g. **Matisse** Yarn in colour no. 82. Knitting needles no. 5. Crochet hook no. 4.00. Tapestry needle. 3 press studs.

Size: 40 (42-44)

PATTERN STITCHES

Purled stitch
Chain stitch
Single crochet
Double crochet
Bobble: 5 chs., 1 dc. in the first chain
Reverse stitch: work like a double crochet from left to right.
Stem stitch embroidery

GAUGE

10x10 cm. work with knitting needles no. 5 in purled stitch = 19 sts. and 20 rows

WORKING INSTRUCTIONS

Back: with the knitting needles cast on 90 (94-98) sts. and work in purled stitch decr. at ends 1 st. every 6 rows 7 times. When work measures 23 (24-25) cm. from beg. of work, to shape the armholes bind off at ends, every 2 rows, 4 sts., 1 st. 3 times. When work measures 15 (16-17) cm. from beg. of armholes, to shape the shoulder slant bind off st ends, every 2 rows, 6 sts., 5 sts., twice. When work measures 3 cm. from beg. of shoulder slant bind off the 30 (32-34) rem. stitches.

Right front: with the knitting needles cast on 45 (47-49) sts. and work in purled stitch. On the left of shape the side and armhole in same way as back. When work measures 33 (35-37) cm. from beg. of work, to shape the neckline bind off on right of work, every 2 rows, 7 sts., 3 sts., 1 st. 5 times. When work measures 15 (16-17) cm. from beg. of armhole shape the shoulder in the same way as back.

Left front: work to match right front.

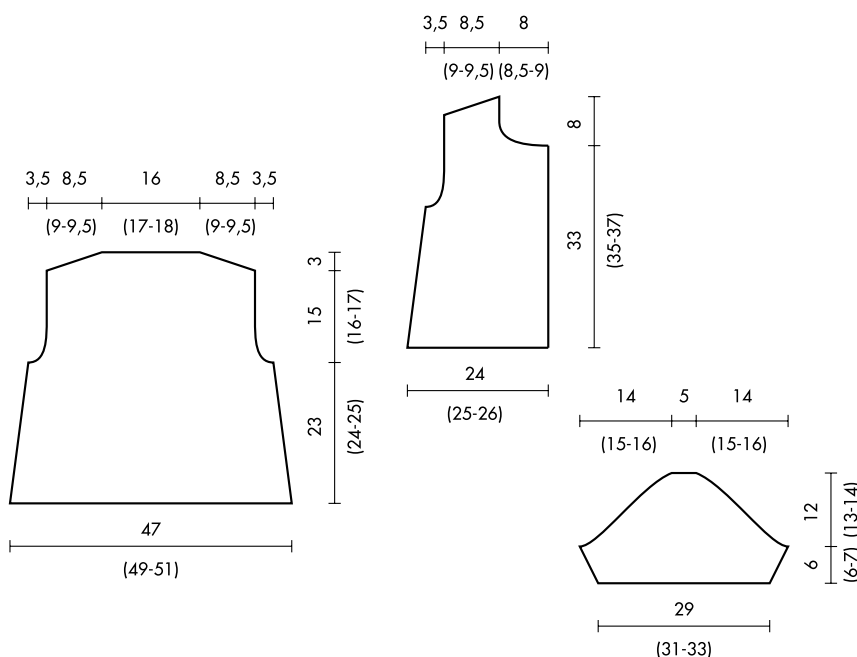
Sleeves: with the knitting needles cast on 56 (60-64) sts. and work in purled stitch. At ends incr. 1 st. every 4 rows twice, 1 st. after 2 rows. When work measures 6 (7-8) cm. from beg. of work to shape the armholes bind off at ends, every 2 rows, 4 sts., 2 sts.

11 (12-13) times. When work measures 12 (13-14) cm. from beg. of armholes bind off 10 rem. stitches.

Buttons: with crochet hook cast on 4 chain sts. closing in a loop with 1 sc. in the first chain and, in the loop obtained work 6 dcs.; cont. working in dc. in rounds increasing stitches evenly to work a 4 cm. diameter round. Trim the round in reverse st. Embroider the centre of the button with the tapestry needle in stem st. to form a ringlet. Make 3 identical buttons.

MAKE UP AND FINISH

Sew up the shoulder. With the knitting needles pick up 77 (81-85) sts. around the neckline (not including the first and the last 3 cm. of the neckline) then work in purled stitch; when work measures 4 cm. from beg. of work distribute 9 incrs. and rep. these incrs. after 4 rows; when work measures 5 cm. from beg. of work decr. at ends 1 st. every 2 rows 4 times. When work measures 7 cm. from beg. of work bind off all the stitches. Sew up the sides. Bind and join the sleeves. Sew on the press studs spaced evenly along the buttoning side (on back of right front and on right side of left front). Sew on the buttons worked with crochet hook, opposite the press studs, along the buttoning side of the right front. Trim the buttoning sides and edges of the collar with crochet hook working in dc. Trim the bottom of the back, front and sleeves as follows: * 3 dcs., 11 bobbles*, rep. from * to *, 3 dcs. Break off and bind the yarn.



TOP "GLADIOLO"

yarn *CHANCE*

MATERIAL ADRIAFIL YARNS

MATERIALS REQUIRED

250 g. **Chance** yarn in off white no. 12. Knitting needles no. 4. Tapestry needle.

Size: 42 (40-44)

PATTERN STITCHES

Rib stitch (beg. and finish)

K1/p1 in back loop rib (work the back yarn of every st. as it stands)

Knitted stitch

Eyelet stitch (work over 4 sts.):

Row 1: (1 yo, k2 tog.) twice

Row 2: purl.

Row 3: rep. from row 1.

Stock stitch to end the rib.

GAUGE

10x10 cm. work with knitting needles no. 4 in stock stitch = 24 sts. and 30 rows.

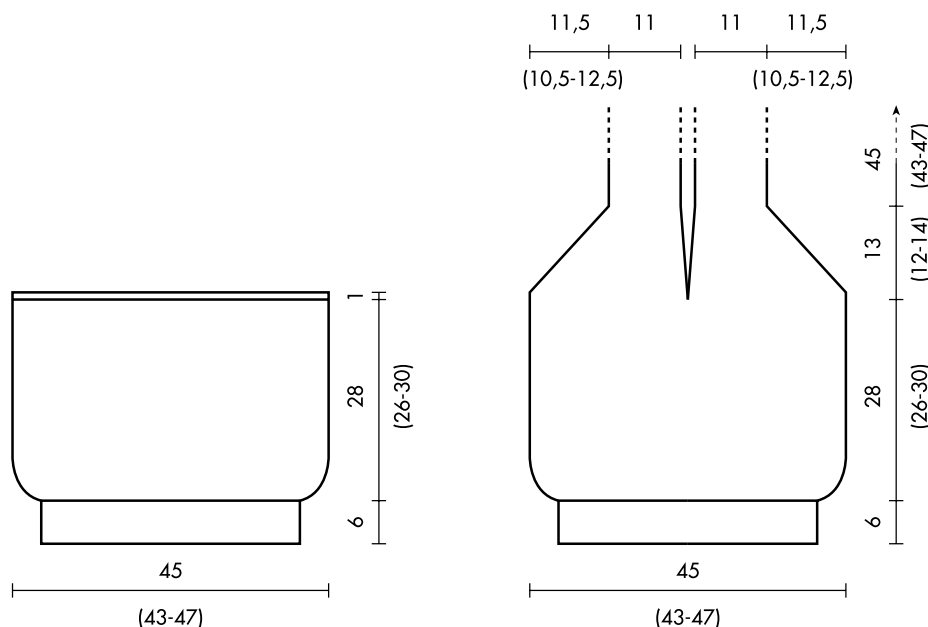
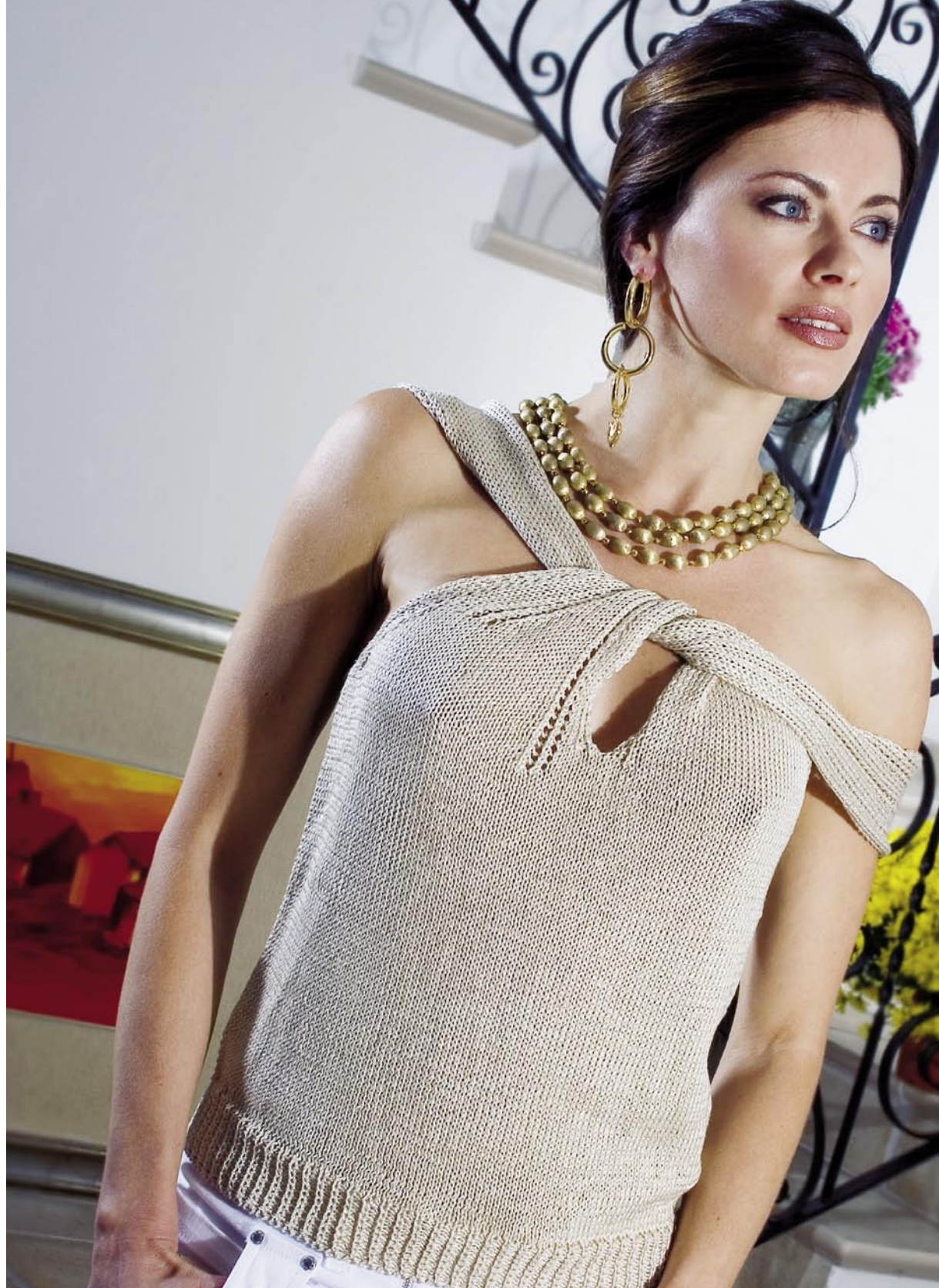
WORKING INSTRUCTIONS

Back: cast on 90 (86-94) sts. and, for the border, work 2 rows in rib st. and 18 rows. in k1/p1 in back loop rib, for a height of 6 cm. Cont. in stock stitch increasing 18 sts. over first row. When work measures 28 (26-30) cm. from border cont. in rib st. for 10 rows, for a height of 1 cm., then graft stitches with tapestry needle.

Front: work like the back until work measures 28 (26-30) cm. from border. To shape the neckline and the armholes divide work in half and finish the 2 parts separately. Work over the first 54 (52-56) sts. as follows: for the armhole decr. on right of work, inside 6 sts. and every 2 rows, 2 sts. 6 times, 1 st. 14 (12-16) times (the neckline side will be on right side). When work measures 13 (12-14) cm. from beg. of armhole cont. over the 28 rem. stitches for the shoulder strap for 45 (43-47) cm.; bind off stitches. Pick up work over 54 (52-56) standing stitches then work : 4 sts. in stock stitch, 4 sts. in eyelet st., 38 (36-40) sts. in stock stitch, 4 sts. in eyelet st., 4 sts. in stock stitch; at the same time decr. on the left of work, inside 8 sts., 1 st. every 2 rows 19 (18-20) times. When work measures 5 cm. from beg. of armhole work 1 pattern in eyelet st. inside the last 12 sts. and, at the same time, decr. inside this pattern, 1 st. every 2 rows 12 (11-13) times. When work measures 13 (12-14) cm. from beg. of armhole cont. over the 23 rem. stitches for the shoulder strap as follows: 4 sts. in stock stitch, (4 sts. in eyelet st., 2 sts. in stock stitch) 3 times, 1 st. in stock stitch. When work measures 45 (43-47) cm. from beg. of the shoulder strap, bind off stitches.

MAKE UP AND FINISH

Sew up the sides. Cross the shoulder straps (once or twice, to the required length) and join the closing side to the top edge of the back at 12 cm. from the respective side.



Filato/Yarn
Chance



Working Instructions

19

D&R n°40