

“MELITA” TOP



MATERIALS ADRIAFIL YARNS

MATERIALS REQUIRED

150 g. yarn **Faraone 12** cream no. 11. Crochet hook no. 1.00.

SIZE: IT 42/44 - US 8/10 - UK M/L

PATTERN STITCHES

- Chain stitch
- Single crochet
- Double crochet
- Half treble crochet
- Treble crochet
- Double-treble
- Bobble: 3 chs., 1 sc. in the first chain

GAUGE

Each squares measures 5.5x5.5 cm.

WORKING INSTRUCTIONS

The top has 93 squares.

Square: to work the first square cast on a 10 st. chain, ending with a 1 sc. loop in the first chain and, in the loop obtained, work following the chart.

At the end, break off and bind the yarn.

Work the next squares joining them together in the last row, as the work progresses, with 1 dc. in all the 5 ch. loops and in the chain

between the groups of 10 trs. Arrange the motifs in rows as shown by the chart (which shows half of the work). When working the last row of squares, join these to the squares of the first row closing the top with a loop.

MAKE UP AND FINISH

Trim the bottom edge of the top, starting from a tip of the square, as follows:

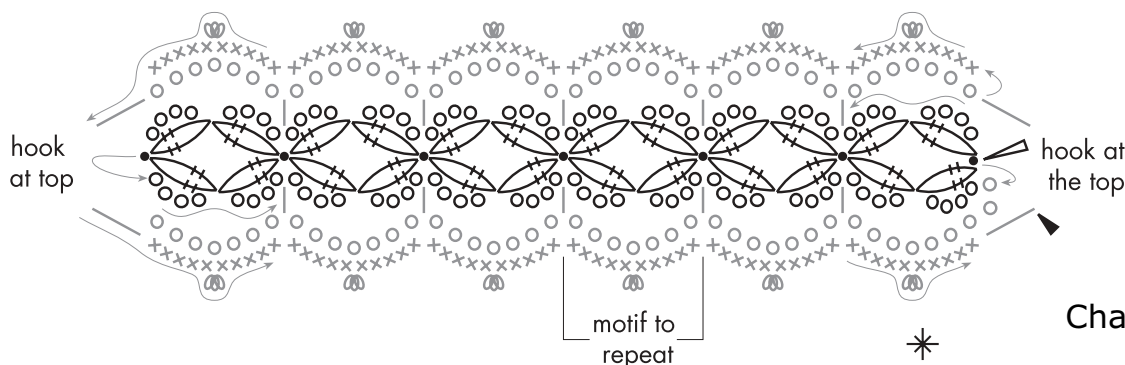
Row 1: * 1 dc. in the chain between the groups of trebles, 7 chns., 1 dc. in the last tr. of the group, 7 chns., 1 dc. in the first tr. of the next group, 1 dc. in the joining point between the 2 squares, 7 chns., 1 dc. in the last tr. of the group of trs. of the next square, 7 chns., 1 dc. in the first tr. of the next group * , rep. from * to *.

Row 2: in each lloop below work 5 dcs., 1 bobble and 5 dcs.

Break off and bind the yarn.

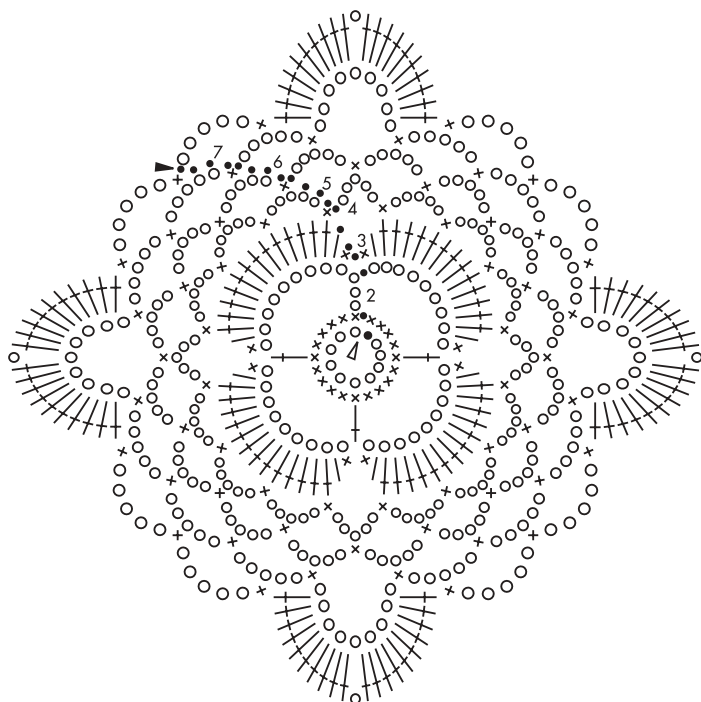
Trim the upper edge in the same way as the front and back, but at the front and back neckline and each armhole (indentation of the work at the joining point of the 2 squares) work 1 tr. instead 1 dc. For each shoulder follow the chart as follows: Join the yarn at a point of the front of the top (shown by an asterisk on the overall chart) and work the first row of petals (= 4 chains and 2 double trs. worked tog.) to the required length for the shoulder; join the last petal to the corresponding tip of the back, then work the second row of petals on the opposite side joining it to the first row every 2 petals with 1 sc. At the end of the second row, join the work at the tip of the top. Cont. with the loops working over with double crochets and joining these two rows to the tips of the top.

Chart of the shoulder

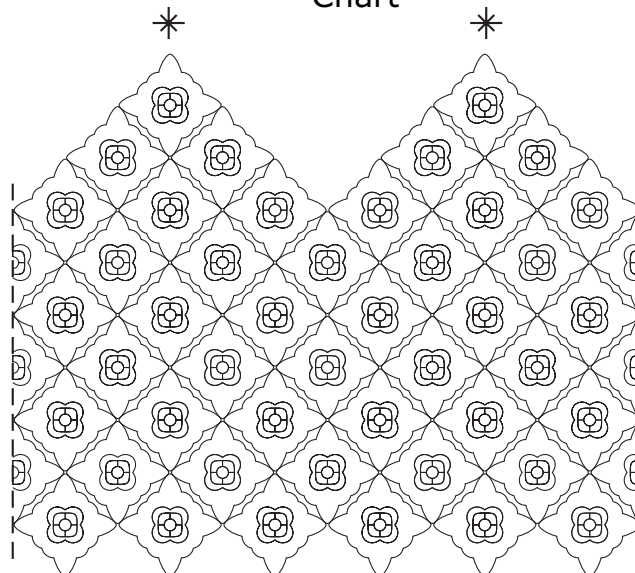


- = work 2 double trebles tog.
- = bobble
- = start of work
- = end of work
- = chain
- = single crochet
- = double crochet
- = half treble

Chart of the square



Chart



Top pattern

- = chain
- = single crochet
- = double crochet
- = mezza m. alta
- = half treble
- = start of work
- = end of work

