

“INDIA” TOP



MATERIALS ADRIAFIL YARNS

MATERIALS REQUIRED

100 g yarn **Uno A Ritorto 16/3=12** cream no. 11. Crochet hook no. 1.00.

SIZE: IT 40 - US 6 - UK S

PATTERN STITCHES

Chain stitch
Single crochet
Double crochet
Treble crochet
Double-treble
Bobble: 3 chs., 1 sc. in the first chain

GAUGE

Each square measures 3.5x3.5 cm.

WORKING INSTRUCTIONS

The top consists of 210 squares.

Square: to work the first square, cast on a 6 st. chain, closing with a 1 sc. loop in the first chain and, in the loop obtained, work following the chart.

At the end, break off and bind the yarn.

Work the next squares joining them together in the last row, as you work, with 1 dc. in all the 5 ch. loops. Arrange the motifs in rows as shown by the chart (which shows half the work). When working the last row of squares, join these to the squares of the first row, closing the top with a loop.

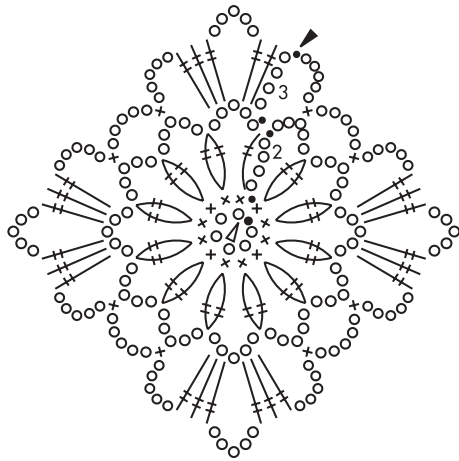
MAKE UP AND FINISH

Trim the bottom edge of the top, starting at the tip of a square, as follows: * in the loop of the tip, work 3 dcs., 1 bobble and 3 dcs.; 1 dc. in each of the 3 next double trs., 5 dcs. in the next loop, in the next loop work 2 dcs., 1 bobble and 2 dcs.; 5 dcs. in the next loop, 1 dc. in each of the 3 next double trs., 3 dcs. in the next half-loop (= loop joining 2 squares), 1 bobble, 3 dcs. in the loop of the next square., 1 dc. in each of the 3 next double trs., 5 dcs. in the next loop, in the next loop work 2 dcs., 1 bobble and 2 dcs.; 5 dcs. in the next loop, 1 dc. in each of the 3 next double trs. *, rep. from * to *

Trim the upper edge in the same way as the front and back, but, over the joining point between the squares, work only 2 dcs., 1 bobble and 2 dcs.

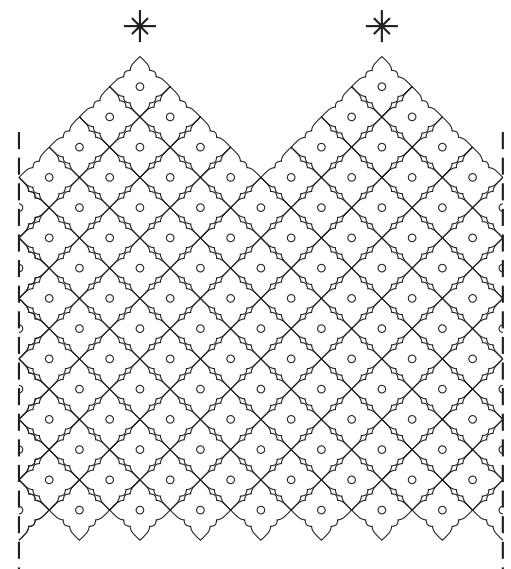
For each shoulder, join the yarn at the top of a point of the front of the top (shown by an asterisk in the chart) and work a chain of the length required, then cont. following the corresponding chart: in row 2 joining the shoulder to the corresponding tip of the back of the top.

Chart of the square

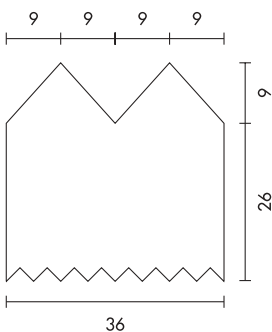


- = chain
- = single crochet
- × = double crochet
- ⋈ = treble
- ⋈ = work 2 double-treble tog.
- ▽ = start of work
- ▼ = end of work

Chart



Top pattern



- = chain
- = single crochet
- × = double crochet
- ⋈ = treble
- ☉ = bobble
- ▽ = start of work
- ▼ = end of work

