

# PULL "MORENA"

## JUMPING STAMPATO Yarn



### MATERIAL ADRIAFIL YARNS

#### MATERIALS REQUIRED

350 g. **Jumping stampato** yarn in green no. 32. Knitting needles no. 7. Cable needle no. 7. Crochet hook no. 5.00. Tapestry needle with rounded tip.

**SIZE:** 42 - US 8 - UK M

#### PATTERN STITCHES

Knitted stitch

Purled stitch

Rice stitch

Rib stitch 4/3 (k4, p3, in columns)

Twisted stitch (work over 18 sts.):

**Row 1 and 3:** knitted stich.

**Row 2 and next even rows:** in purled stich.

**Row 5:** 12 sts. crossed rightwise (= stand off 6 sts. on cable needle at back of work, k6, knit standing stitches), k6

**Row 7 and 9:** knitted stich.

**Row 11:** k6, 12 sts. crossed leftwise (= stand off 6 sts. on cable needle in front of work, k6, knit standing stitches).

**Row 13 and 15:** knitted stich.

**Row 17:** rep. from row 5.

Plait stitch A (work over 12 sts.):

**Row 1 and 3:** knitted stich.

**Row 2 and next even rows:** in purled stich.

**Row 5:** 12 sts. crossed leftwise (= stand off 6 sts. on cable needle in front of work, k6, knit standing stitches).

**Row 7:** knitted stich.

**Row 9:** rep. from row 1.

Basket stitch (work over 21 sts.):

**Row 1 and 3:** knitted stich.

**Row 2 and next even rows:** in purled stich.

**Row 5:** \* 6 sts. crossed leftwise (= stand off 6 sts. on cable needle in front of work, k3, knit standing stitches) \*, rep. from \* to \*, k3

**Row 7:** knitted stich.

**Row 9:** k3, \* 6 sts. crossed rightwise (= stand off 6 sts. on cable needle at back of work, k3, knit standing stitches) \*, rep. from \* to \*.

**Row 11 and 13:** knitted stich.

**Row 15:** rep. from row 5.

Plait stitch B (work over 6 sts.):

**Row 1:** knitted stich.

**Row 2 and next even rows:** in purled stich.

**Row 3:** 6 sts. crossed leftwise (= stand off 6 sts. on cable needle in front of work, k3, knit standing stitches).

**Row 5:** knitted stich.

**Row 7:** rep. from row 1.

Plait stitch C (work over 8 sts.):

**Row 1 and 3:** knitted stich.

**Row 2 and next even rows:** in purled stich.

**Row 5:** 8 sts. crossed leftwise (= stand off 4 sts. on cable needle in front of work, k4, knit standing stitches).

**Row 7 and 9:** knitted stich.

**Row 11:** rep. from row 1.

Reverse stitch: work as dc. from left to right

#### GAUGE

10 x 10 cm. with knitting needles no. 7 in rib st. 4/3 = 16 sts. and 20 rows.

#### WORKING INSTRUCTIONS

**Back:** with knitting needles no. 7 cast on 60 sts. and work in rice stitch. When work measures 7 cm. from beg., cont. in rib st. 4/3. When work measures 24 cm. from the edge, to shape the armholes bind off at ends 3 sts. and dec., inside the 2 edge st., 1 st. every 2 rows 4 times. When work measures 15 cm. from beg. of armholes, to shape the shoulder slant bind off at ends, every 2 rows, 5 sts., 4 sts. twice. bind off the rem. stitches.

**Front:** with knitting needles no. 7 cast on 63 sts. and work in rice stitch. When work measures 7 cm. from beg., cont. only on the first 33 sts. (stand off the rem. stitches.) following the chart; at the end of row 42, stand off work. Work the side panel as follows: with knitting needles no. 7 pick up 33sts. along the inner vertical edge of the section just worked (distribute picking up the sts. at every row and every 2 rows so as to keep a sbetweenight edge) and work as follows: 6 sts. in rice stitch, 21 sts. in basket st, 6 sts. in rice stitch; at the same time, pick up 1 standing sts. on the edge of each row and every 2 rows until all the standing stitches have been picked up. When work measures 19 cm. from beg. (= right side), bind off the stitches. Pick up the standing sts. of the first section and, then, pick up 30 sts. along the edge of the side panel (pick up the sts. in the same way as the standing sts. of the edge); cont. over all the sts. following the chart.

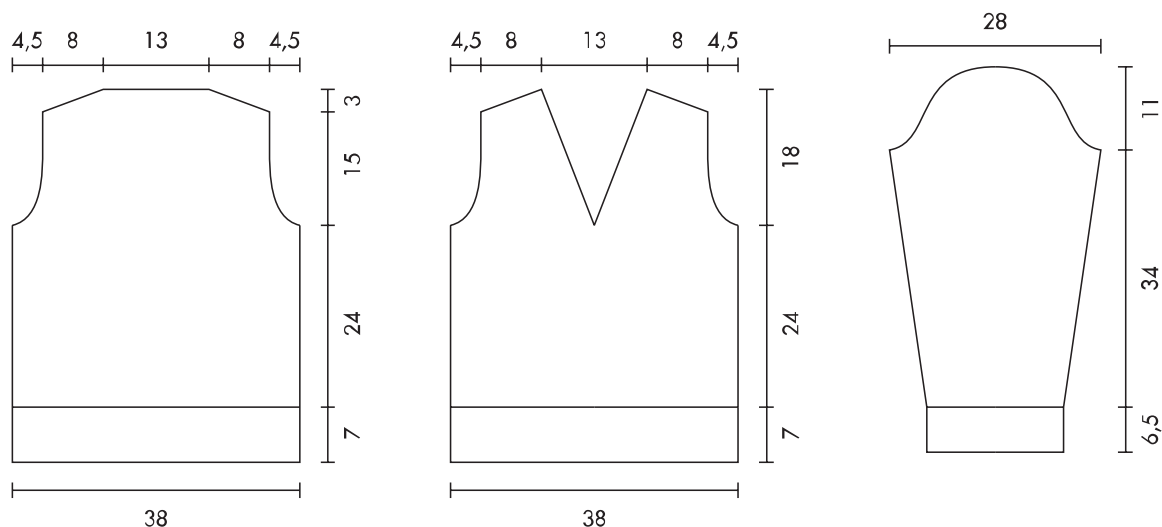
When work measures 24 cm. from the edge, to shape the armholes bind off at ends, every 2 rows, 4 sts., 1 st. 5 times; at the same time, to shape the neckline, bind off the centre st. and finish the two parts separately working the edges of the neckline as follows: on right of work, at the end of each row, on right side of work, knit the last 2 sts. in back loop. and, and without dropping them from needle, knit the first st. again in a backloop; on left of work, at beg. of each row on right side of work, carry the yarn over the right needle (yo), knitting the next 2 sts. then pass the yo over the 2 sts. worked; on wrong side of work pass the first st. of the row without working and purl the next stitch.

After 14 rows from beg. of neckline, dec. 1 st. at the sides, of the collar, inside the 3 sts. and work in another dec. after 10 rows. When work measures 15 cm. from beg. of armholes and neckline, to shape the shoulder slant bind off at ends, every 2 rows, 7 sts. twice, 6 sts. N.B. The neckline will widen automatically due to the crossings worked at the sides.

**Sleeves:** with knitting needles no. 7 cast on 30 sts. and work in rice stitch. When work measures 6.5 cm. from beg., establish the sts. as follows: 1 st. in knitted st., 10 sts in rib st. 4/3 (start with 3 sts in purled st.), 8 sts. for plait C, 10 sts. in rib st. 4/3, 1 st. in knitted st. At the sides, inc. 1 st. every 16 rows, 3 times and, at the same time, inc. at the sides of the plait 1 st. every 20 rows twice. When work measures 34 cm. from the edge, to shape the armholes bind off at ends, every 2 rows, 3 sts., 1 st. 10 times. When work measures 11 cm. from beg. of armholes, bind off the rem. stitches.

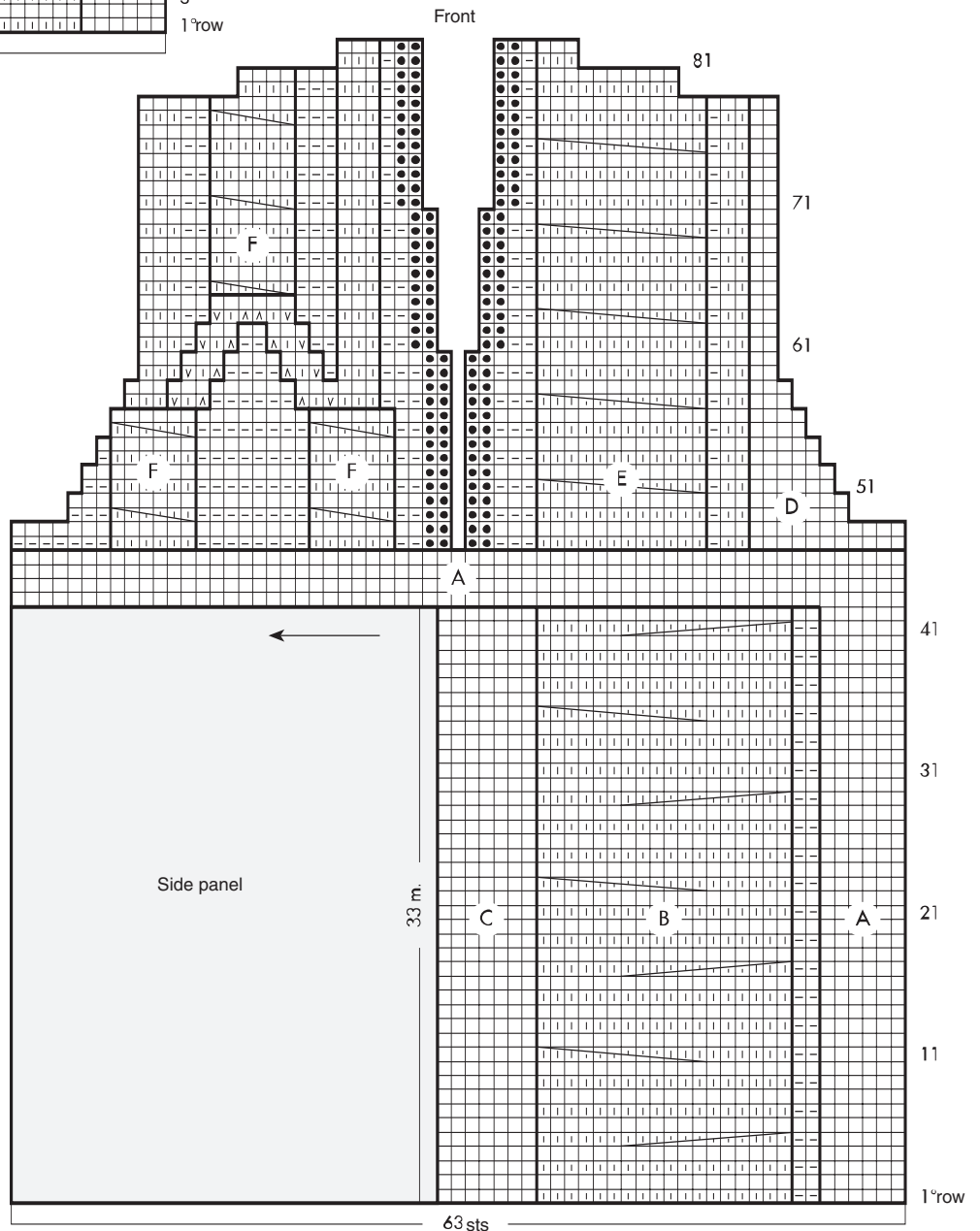
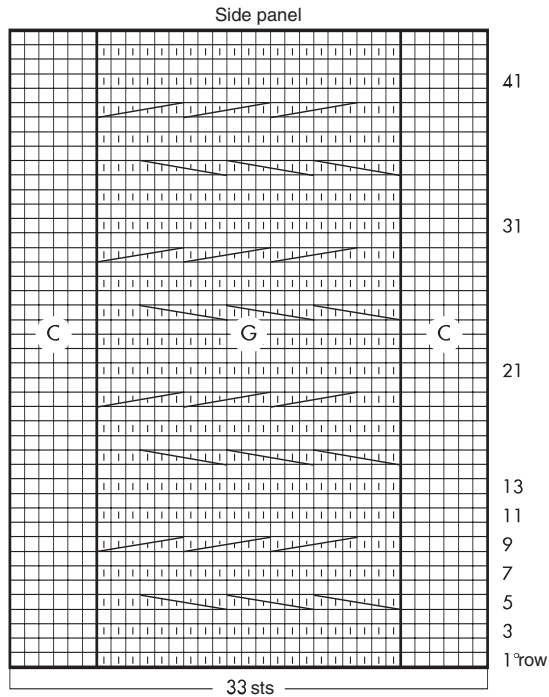
#### MAKE UP AND FINISH

Sew up the shoulders. Join and sew on the sleeves. Sew up the sides. Trim the back neckline with the crochet hook in reverse st.



# PULL "MORENA"

## JUMPING STAMPATO Yarn



- A = knitted stitch
  - B = twisted st
  - C = rice stitch
  - D = purled stitch
  - E = cable st. A
  - F = cable st. B
  - G = basket st.
  - ☐ = k1
  - ◻ = p1
  - = bind 6 sts. leftwise
  - = bind 6 sts rightwise
  - = bind 12 sts rightwise
  - = bind 12 sts leftwise
  - = 1 edge stitch
  - ◻ = 1 st. as it presents itself
- Each square corresponds to 1 st. and 1 row.