

# PULL and BAG "ETNIC"



## yarns *NAVY*, *RAFIA* and *FRUIT*

**YARN**  
ADRIAFIL YARNS

**PULL**  
**MATERIAL REQUIRED**  
450 G *Navy*, Military Green no. 48. Knitting needles no. 7. Tapestry needle.

**SIZE:** IT 42 (44-46) - US 8 (10-12) - UK M (L-XL)

**PATTERN STITCHES**  
Knitted stitch  
Purled stitch  
Leaf stitch (work over a multiple of 19 + 1): follow the diagram.

**GAUGE**  
10 cm x 10 using knitting needles no. 7 in knitted st. = 11 sts. and 16 rows

**WORKING INSTRUCTIONS**  
**Back:** using knitting needles no. 7 cast on 60 (62-64 sts and work 1 (2-3) edge sts 58 sts. in leaf stitch following the chart, 1 (2-3) edge st.; once the chart has been completed, cont. in knitted st. When work measures 12 cm., decr. on each side, inside 1 edge st., 1 st. every 8 rows. 3 times; When work measures 25 (26-27) cm., incr. at each end 1 st. every 6 rows. 3 times. When work measures 37.5 (39-40) cm., to shape the raglan decr. on each side, 1 st. every 2 rows. 11 (12-13) times as follows: purl the first and last 3 sts and work all the rem. sts. in knitted st.; At the same time., inside these 3 sts. work in the decr.: rightwise, on right side of work, slip 1., k3, pass the stitch slipped on the 3 knitted sts. and complete the row; leftwise, on wrong side of work, slip 1 st., p3, pass the stitch slipped on the 3 purled sts. and complete the row. When work measures 13 (14-15) cm. from beg. of the raglans, cont. over all the stitches. in purled stitch for cm 2, then bind off all the stitches.

**Front:** work to match the back.  
**Sleeves:** using knitting needles no. 7 cast on 26 (28-30) sts. and work 3 (4-5) edge sts., 20 sts. in leaf stitch following the chart, Follow chart for the back only for the last 20 sts without working the slip 1, k2 tog. pass slipped st. over on row 13. 3 (4-5) edge sts.; once the chart has been completed, cont. in knitted st. On each side, incr. 1 st. every 10 rows 7 times. When work measures 47 (48-49) cm., shape the raglans and complete work like the back.

**FINISHING**  
Sew up the raglan. Sew up the section from the cuff to the side.

**BAG**  
**MATERIAL REQUIRED**  
A total of 100 g of different yarns including: 50 g *Rafia* no. 50, 50 g *Fruit* n. 61. Knitting needles no. 9. Crochet hook no. 7. 2 leather cords of 65 cm. Tapestry needle.

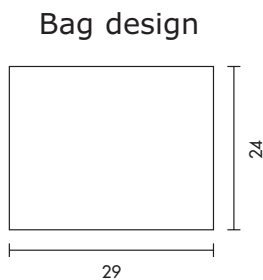
**DIMENSIONS:** 29x24 cm.

**PATTERN STITCHES**  
Fancy stitch (work over even sts.):  
Row 1: k1, \* 1 yo., k2, slip yo on the 2 knitted sts. \*, rep. from \* to \*, k1  
Row 2 and all even rows: purled stitch.  
Row 3: rep. from row 1.  
Double crochet

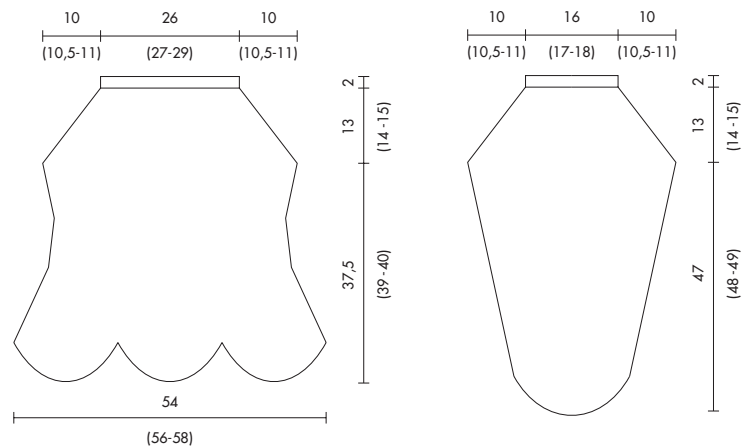
**GAUGE**  
10 cm x 10 using knitting needles no. 9 and the two yarns wound together work in fancy st= 13 sts. and 14 rows

**WORKING INSTRUCTIONS**  
Work in two equal sections. Work the first section using knitting needles no. 9 and the two yarns wound together and cast on 38 sts working in fancy st. When work measures 24 cm., bind off all the stitches. Work the second section in exactly the same way.

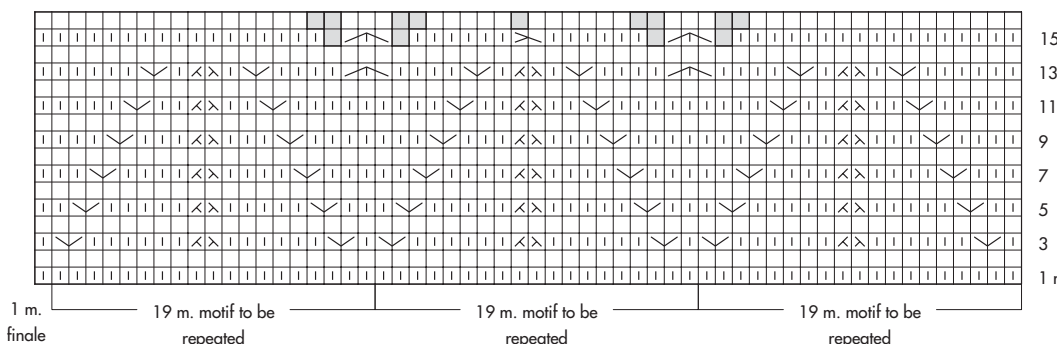
**FINISHING**  
Sew up the side edges and the bottom. With the crochet hook and the two yarns wound together, trim the side edges, the bottom and the upper edge in dc. To make the handles, knot the cords on the ends of both sides of the bag.



Pull design



Leaf stitch  
(17 r.: 51 m.)



- = slip 1, knit 1, pass slipped st. over
- = k2 tog.
- = k1. Incr. 1 spaced at intervals
- = slip 1, k2 tog. pass slipped st. over
- = 1 decreased st.
- = knit st.