

YARNS
ADRIAFIL YARNS

TOP
MATERIAL REQUIRED

200 g *Stretch*, Green no. 20. Knitting needles no. 6. Tapestry needle.

SIZE: IT 40 (42-44) - US 6 (8-10) - UK S (M-L)

PATTERN STITCHES

Elastic rib (beginning and end)
k2/p2 rib stitch
Knitted stitch
Laddered pattern: follow the chart.
Shell stitch to end the Elastic rib

GAUGE

10 cm x 10 with knitting needles no. 6 in knitted st. with laddering = 15 sts. and 25 rows

WORKING INSTRUCTIONS

Back: with knitting needles no. 6, cast on 50 (54-60) sts. and work 4 rows. in elastic rib, then in k2/p2 rib st. for a total of 3,5 cm. Cont. in knitted st. When work measures 34 (35-36) cm. from the edge, to shape the armholes decr. on each side, inside 1 st., 2 sts. every 4 rows per 8 times (2 sts. every 4 rows per 8 times, 1 st. after 2 rows - 2 sts. every 4 rows 9 times, 1 st. after 2 rows) as follows: on right of work k3; on left of work slip 1, k2 tog. pass slipped st. over (for plain decr. k2 tog. or slip 1, k1, pass slipped st. over). When work measures 13 (14-15) cm. from the beg. of the armholes, stand off all the rem. stitches.

Front: work to match the back following the chart for the layout of the laddered pattern.

FINISHING

For the neck, pick up the standing sts. of the front, then cast on another 7 (8-9) sts., pick up the standing st. of the back, then cast on another 7 (8-9) sts.; work in k2/p2 rib st. for 6 cm., then in elastic rib for 4 rows.; bind off the sts. with the tapestry needle. Sew up the sides of the collar. Sew up the sides.

SKIRT

MATERIAL REQUIRED

200 g *Stretch*, colour no. 20. Knitting needles no. 6. Tapestry needle.

SIZE: IT 40 (42-44) - US 6 (8-10) - UK S (M-L)

PATTERN STITCHES

Elastic rib (casting)
k2/p2 rib stitch
Knitted stitch
Laddered motif: see chart.

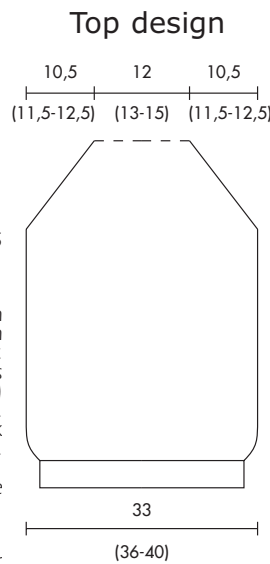
GAUGE

10 x 10 cm. using knitting needles no 6, work in knitted stitch with laddering = 15 sts. and 25 rows

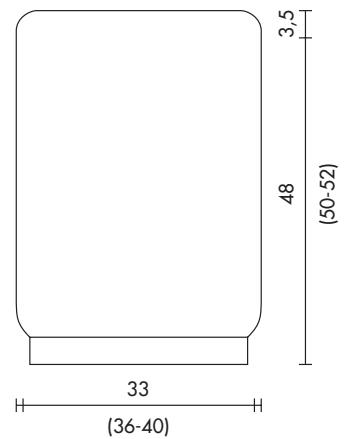
WORKING INSTRUCTIONS

Back: With knitting needles no. 6 cast on 53 (58-63) sts and work 4 rows in elastic rib then work in k2/p2 rib st. for 3,5 cm. Cont. in knitted stitch. When work measures 47 (49-51) cm. from edge, decr. on each side 2 sts. inside 1 edge stitch (on right of work, k3 tog.; on left of work slip 1, knit 2 tog., pass slipped st. over). Work return row and work another 2 rows, then bind off all the stitches.

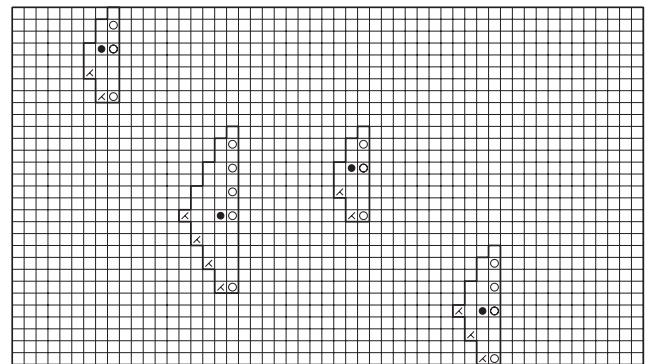
Front: work to match back, but when edge has been completed cont. following the chart for the layout of the motifs with laddering. When chart has been completed, cont. in knitted stitch as described for back.



Skirt design

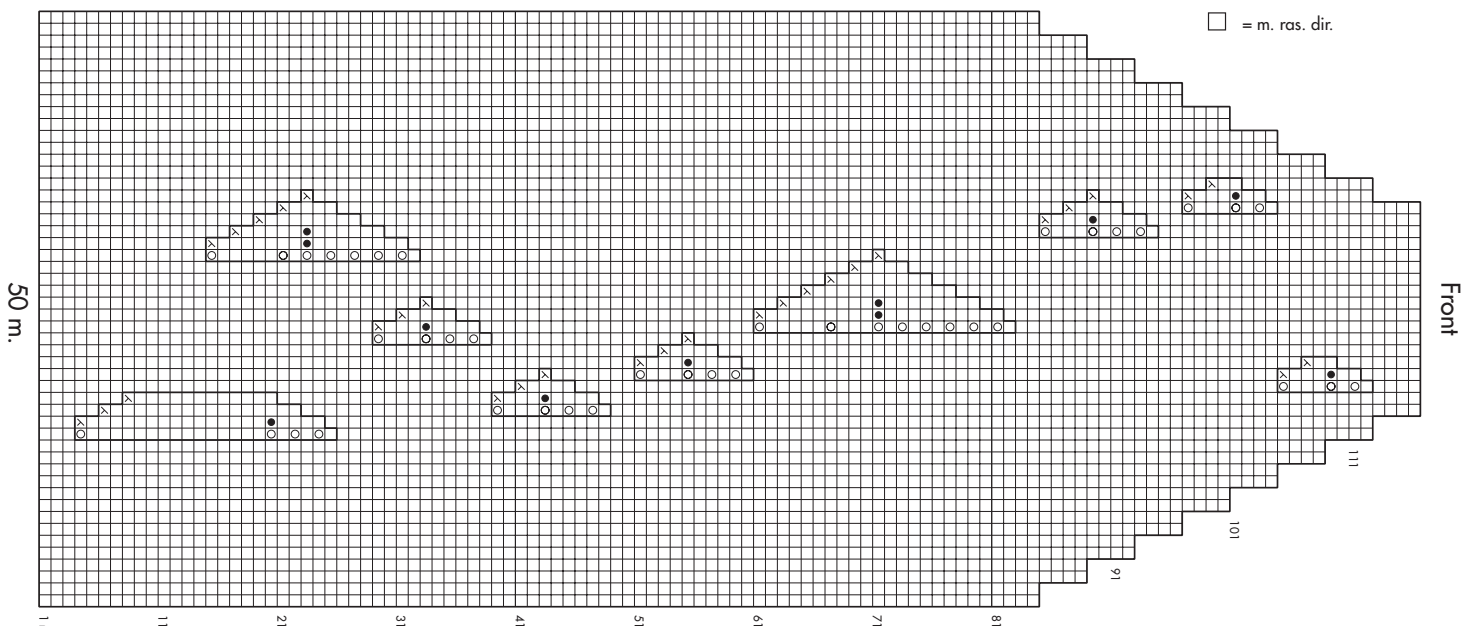


Skirt chart



53 m.

Top chart



- = 1 gett.
- ⊗ = 2 m. ins. a dir.
- = 1 m. lasciata cadere
- = m. ras. dir.