

UNDERGLASSES & POT HOLDERS



yarns *MEMPHIS AND CHEOPE*

YARN ADRIAFIL YARNS

SQUARE UNDERGLASSES MATERIALS REQUIRED

50 g **Memphis** for each of the following colours: bitter green no. 95, dark green no. 36, orange no. 90, red no. 17, brown no. 96 and **Cheope** in the following colours: yellow no. 78 and wine red no. 27, crochet hook no. 2.50, tapestry needle.

DIMENSIONS: the finished measures of the pot holders are:

- pot holder "1": 14x14 cm
- pot holder "2": 13,5x13,5 cm
- pot holder "3": 14,5x14,5 cm

PATTERN STITCHES

Chain stitch
Single crochet
Double crochet
Treble crochet
Bobble: 3 ch, 1 dc in the first chain

WORKING INSTRUCTIONS

Pot holder "1": consists of the following 3 pieces:

- section 1A in light green yarn, 10 x10 cm
- section 1B in dark green yarn, 13,5x13,5 cm
- section 1C in orange yarn, 14x14 cm

Pot holder "2": consists of the following 4 pieces:

- section 2A in red yarn, 8,5x8,5 cm
- section 2B in brown yarn, 11x11 cm
- section 2C in yellow yarn, 13x13 cm
- section 2D in red yarn, 13,5x13,5 cm

Pot holder "3": consists of the following 3 pieces:

- section 3A in yellow yarn, 9x9 cm
- section 3B in red yarn, 12,5x12,5 cm
- section 3C in light green yarn, 14,5x14,5 cm

To work each section of each pot holder, with crochet hook no. 2.50 and the colour indicated cast on a 6 st chain, close with a loop with 1 sc, and, in the loop obtained, work as shown in the corresponding charts (for la pot holder 2D follow the same chart as that of pot holder 1B). At end of work, break off and bind the yarn.

MAKE UP AND FINISHING

Overlap the corresponding pieces of each pot holder, turning them as shown by the chart and join at the centre with invisible stitches on back of work.

HEART-SHAPED POT HOLDERS

MATERIALS REQUIRED (for one pot holder)

50 g **Memphis** in the following colours of your choice: green no. 95, orange no. 90, red no. 17 and **Cheope** yarn in: wine red no. 27 and yellow no. 78 (3 colours for each holder), crochet hook no. 3.50, tapestry needle.

DIMENSIONS: 16x13 cm

PATTERN STITCHES

Chain stitch
Double crochet
Crab stitch: work as dc from left to right.
Embroidered daisy stitch

GAUGE

10 x 10 cm with crochet hook no. 3.50 in dc = 20 sts and 21 rows.

WORKING INSTRUCTIONS

Each pot holder consists of three heart-shaped sections: the large heart (at the bottom) measures 16x13 cm, the medium sized heart (at the centre) measures 14x12 cm, the small heart (on the top) measures 9x7,5 cm. Work each section in a different colour of your choice.

Large heart: with crochet hook no. 3.50 cast on a 3 sts. chain, and starting from the 2nd chain on the crochet hook, work in dc as follows:
Row 1: 2 dcs

From row 2 to row 15: in dc increasing on each side 1 st.

From row 16 to row 20: in dc with no incs.

Row 21: divide the work in half and end the two parts separately; work in dc decreasing 1 st. on each side of each of the two sections

Row 22: work in dc.

Row 23: work in dc decreasing 1 st on each side of each of the two sections
Row 24: work in dc.

Row 25: work in dc decreasing 1 st on each side of each of the two sections

Row 26: work in dc decreasing 2 sts on each side of each of the two sections
Without breaking off the yarn, finish off the circle with a row of dc and a row of crab stitch.

Medium sized heart: with crochet hook no. 3.50 cast on a 3 st chain and, starting from the 2nd chain on the crochet hook, work in dc as follows:

Row 1: 2 dcs

From row 2 to row 13: work in dc increasing on each side 1 st.

From row 14 to row 16: work in dc without decs.

Row 17: work in dc decreasing on each side 1 st.

Row 18: work in dc.

Row 19: divide the work in half and end the two parts separately; work in dc decreasing 1 st on each side of each of the two sections

Row 20: in dc.

From row 21 to row 23 work in dc decreasing 1 st on each side of each of the two sections

Without breaking off the yarn, finish off the circle with a row in dc and a row in crab stitch.

Small heart: with crochet hook no. 3.50 cast on a 3 st chain and, starting from the 2nd chain on the crochet hook, work in dc as follows:

Row 1: 2 dcs

From row 2 to row 8: work in dc increasing on each side 1 st.

Rows 9 and 10: work in dc without decs.

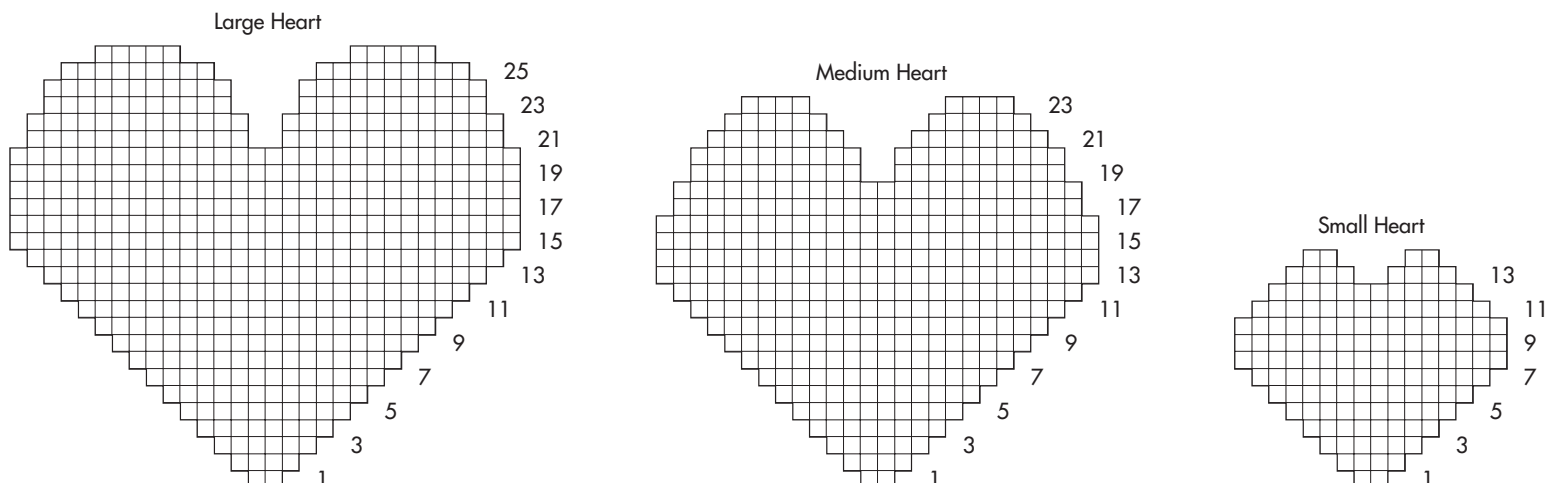
Rows 11 and 12: work in dc decreasing on each side 1 st

Row 13: divide the work in half and end the two parts separately; work in dc decreasing 1 st on each side of each of the two sections

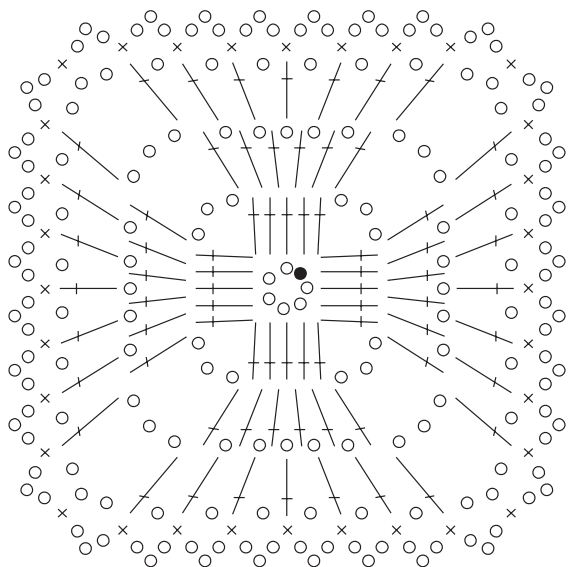
Row 14: work in dc decreasing 1 st on each side of each of the two sections
Without breaking off the yarn, finish off the circle with a row in dc and a row in crab stitch.

MAKE UP AND FINISHING

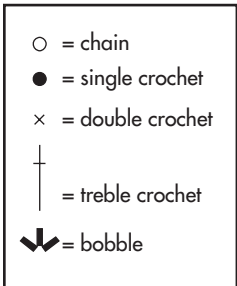
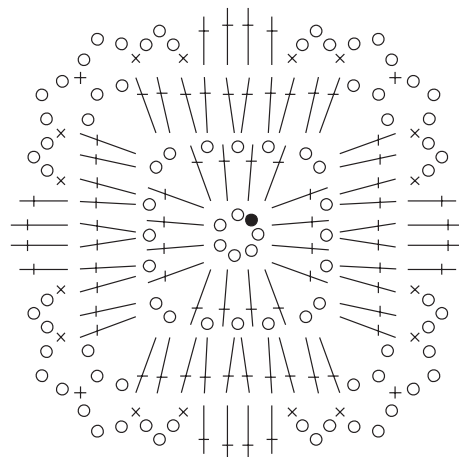
Centre and overlap the three sections. Join together with the small 4-petal flower embroidered in daisy stitch in the colour of your choice.



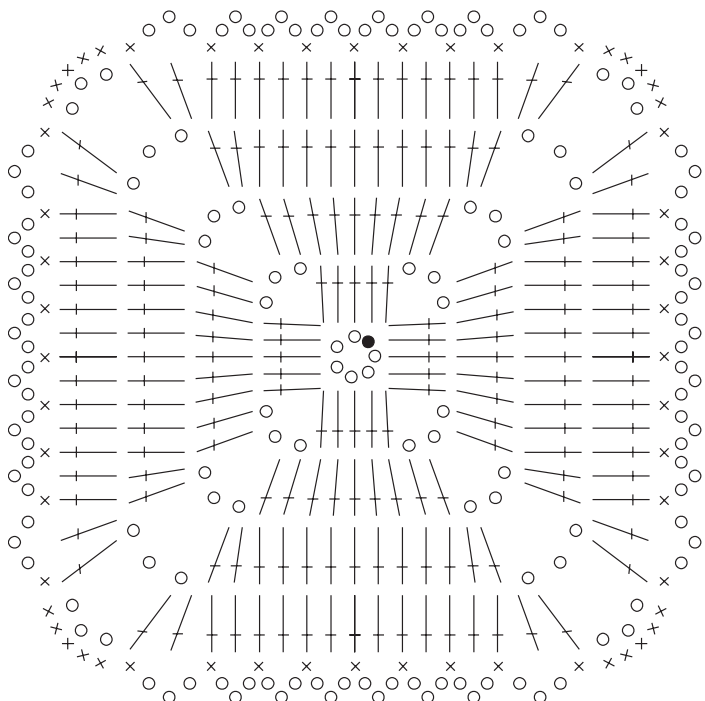
Light green pot holder 1A



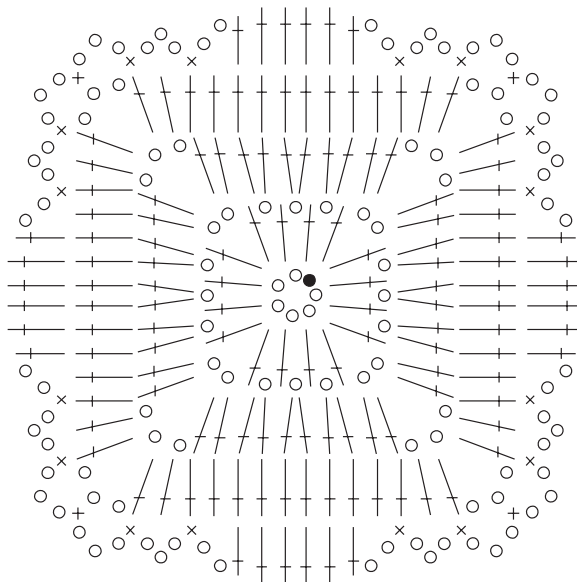
Red pot holder 2A



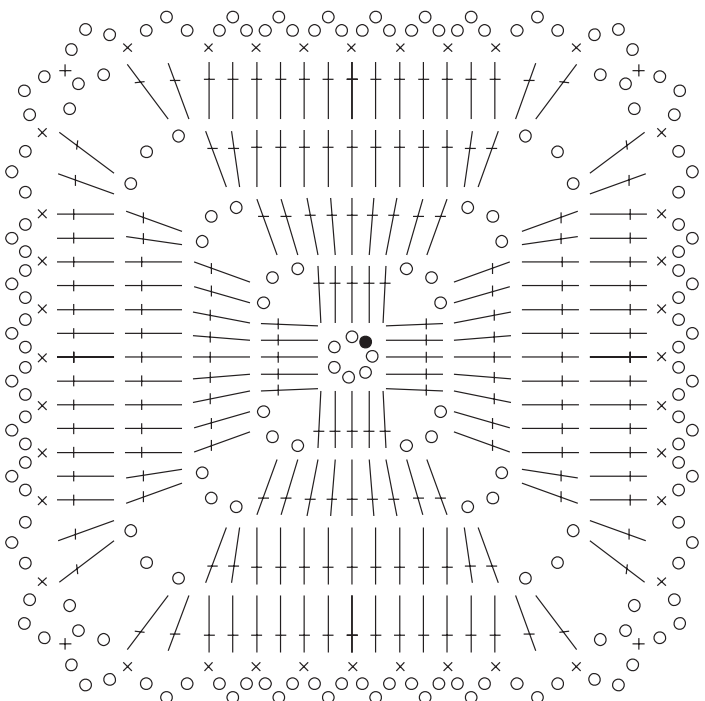
Green pot holder 1B



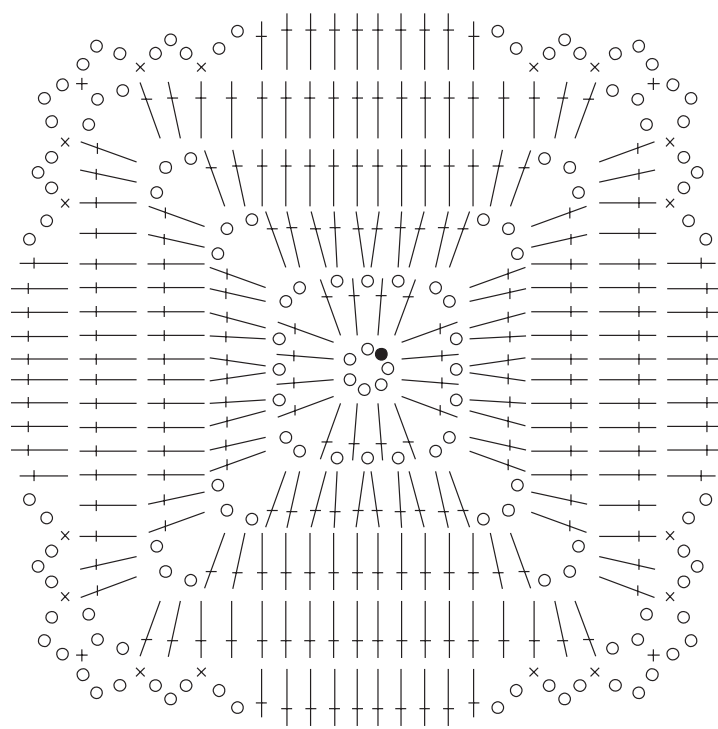
Brown pot holder 2B



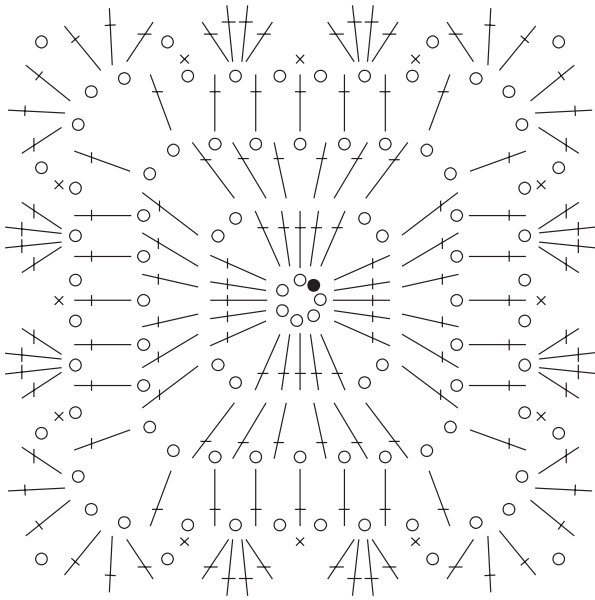
Orange pot holder 1C



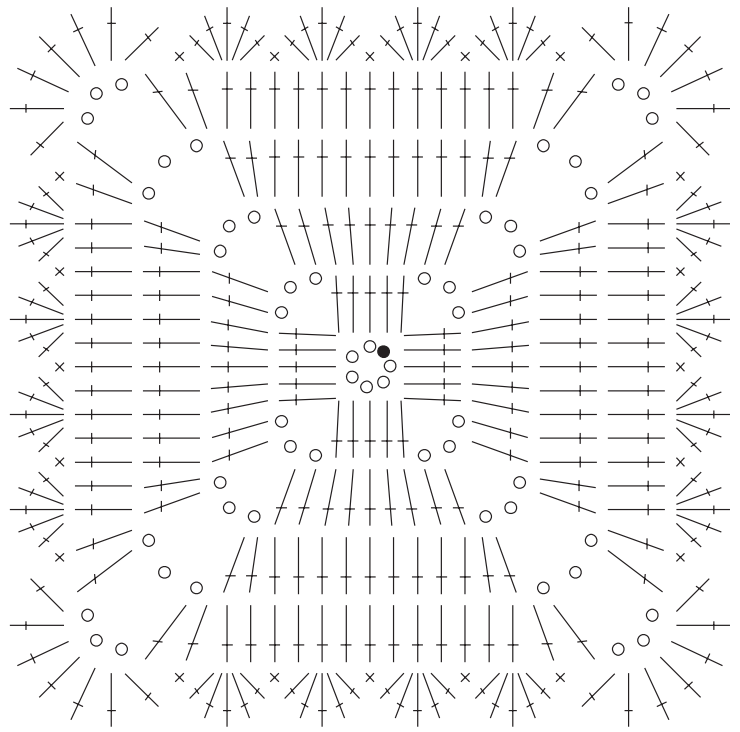
Yellow pot holder 2C



Yellow pot holder 3A



Red pot holder 3B



Light green pot holder 3C

