

PULL

“TITTY”

yarns *CUBA*, *KID MOHAIR*

YARN

AdriaFil yarns

MATERIAL REQUIRED

Yarn amount: 200 (200) 250 g **Cuba** 71, 50g (50g) 75 g **Kid Mohair** 05
Needles: 5 mm (same needle for rib and body)

SIZE S (M) L Shown in M.

Finished measurements:

Chest: 84 (92) 100 cm

Length: ca 43 (45) 47 cm

GAUGE

18 sts / 24 rows = 10 cm In stockinette st

Attention! Always knit a swatch. If your gauge is not correct, change to thicker or thinner needles.

Cable pattern: See diagram.

WORKING INSTRUCTIONS

Back: Cast on 76 (90) 104 sts and work in k2, p2 rib for 2,5 cm. Change to larger needle and stockinette st and establish cable pattern over the center 32 sts. When piece measures ca 25 (26) 27 cm, bind off 4 (5) 6 sts at beg of next 2 rows (all sizes) for armholes. Continue to bind off at each side 2

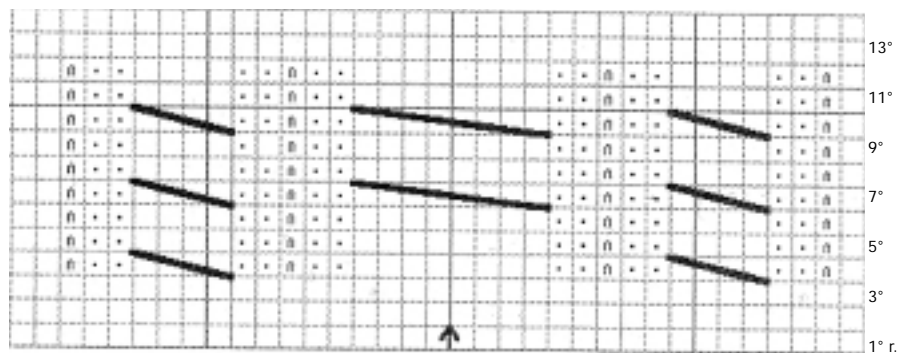
(2) 3 sts one time, and 1 st 3 times (1 st 3 times) 1 st 4 times. When piece measures 41 (43) 45 cm from bottom, bind off center 18 (20) 22 sts for back neck. Work each side of neck opening separately. Bind off from neck edge every other row 5 sts one time and 2 sts one time (all sizes). Bind off remaining sts when piece measures 43 (45) 47 cm. Work other side of neck the same, reversing shaping.

Front: Work same as for back until piece measures 36 (38) 40 cm. Bind off middle 10 (12) 14 sts for front neck. Work each side of neck opening separately. Continue binding off at neck edge every other row 4 sts once, 3 sts once, 2 sts once, 1 st twice (all sizes). When piece measures 43 (45) 47 cm, bind off all sts. Work other side of neck the same, reversing shaping.

Sleeves: Cast on 58 (62) 66 sts and work as for front and back establishing cable pattern after ribbing. Inc. 1 st at each side every 12 rows 5 times (10 rows 6 times) 8 rows 7 times. When piece measures 25 (26) 27 cm, bind off at each side for armhole every other row 4 sts once, 3 sts twice, 2 sts once, 1 st 6 times, 2 sts 3 times, 3 sts once. Bind off remaining sts.

FINISHING

Join left shoulder seam. Pick up 74 (80) 86 sts around neck edge and work in k2, p2 rib for 2,5 cm. Bind off all sts loosely. Join sleeves to shoulders and join side seams.



◻ = slip 1

◼ = purl 1

▤ = stitches to be crossed always towards the upward direction of the slant and using 4 stitches

▥ = stitches to be crossed always towards the upward direction of the slant and using 8 stitches

◻ = knit 1

