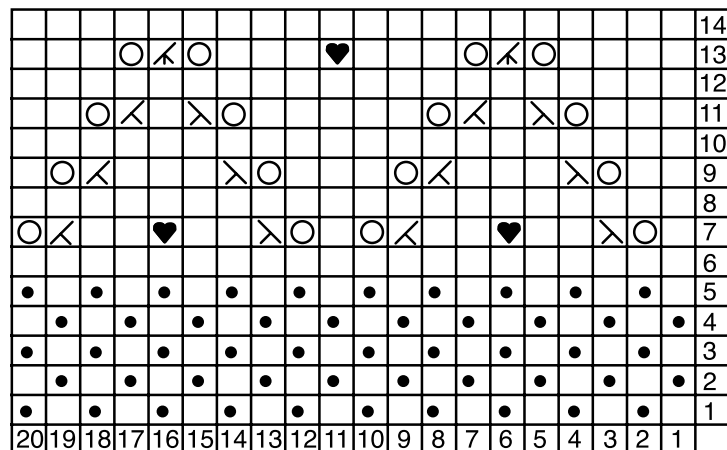


TUNIC "DUCK"

yarn *CANDY*



SIZE: S (M) L Garment is shown in L.
GAUGE: ca 9 sts /13 rows = 10 cm in stock. st.
NEEDLES: 8 mm or size to obtain gauge .
FINISHED MEASUREMENTS:
CHEST: 90 (100) 110 cm
LENGTH: 68 (70) 72 cm
YARN: 650 (700) 750g *Candy* col. 23
DIAGRAM:



Unfilled squares are knit on right-side (RS) rows and purled on wrong-side (WS) rows.
 WS rows = even numbers at right of diagram
 RS rows = odd numbers at right of diagram

- Purl on RS rows, knit on WS rows
- Yarnover
- ◁ Knit 2 tog
- ▷ Slip 1, knit 2 tog, pass slip st over knit sts
- ↘ Slip 1, knit 1, pass slip st over knit st
- ♥ Popcorn st = Knit into front and back loops of st, 2 times = 4 sts; turn and k 4, turn and p 4 then pass the 2nd, 3rd, and 4th sts on right-hand needle one at a time over the first st completing popcorn.

BACK

Cast on 41 (46) 51 sts and knit in stock. st for 13 (14) 15 cm. (Knit diagram 4 times plus 5 additional rows of seedst.) At same time, when piece measures 46 (47) 48 cm, bind off 4 (4) 4 sts at beg of next 2 rows for armhole. Continue raglan shaping by dec 1 st at side edges every 4 rows, 6 times. When piece measures 22 (23) 24 cm from beg of armhole, place a marker at both sides of piece. Continue to work in stock st, dec 1 st at each edge every other row 2 times. Bind off all sts on next right side row.

FRONT

Cast on and work as for back.

SLEEVE

Cast on 23 (23) 25 sts and knit diagram as for front and back. Inc 1 st at side edge every 10 rows 5 times. When piece measures 43 (44) 45 cm, bind off 4 sts from beg of next 2 rows. Continue binding off sts as follows: S = bind off 1 st at each side every 3 rows, 10 times; M/L = bind off 1 st at each side every 3 rows, 10 times, then every 2 rows, once. At the same time, after finishing 4 diagram repeats plus 5 rows of seed st, continue in stock st. After working all bindoffs (= 3 sts), bind off remaining sts as one st.

FINISHING: From RS pick up sts at bottom of sleeves and body (same amount as cast on). Turn and knit one row. Bind off in purl st over next row. Pick up sts at top of neck and work the same as for body and sleeves. Sew in sleeves no further than to neck markers on front and back pieces. Sew neck seams. Join side and sleeve seams.

