

shawl "ginevra"

YARN
Adriafile Yarns

MATERIALS
250 g. Pizzi e Merletti yarn no. 16, white. Crochet hook no. 0.75.

DIMENSIONS: 165x165 cm.

PATTERN STITCHES

Chain stitch
Double crochet
Treble
Double treble
Filet net

TENSION

10 x 10 cm. using crochet hook no. 0.75 work in filet net = 17 squares and 19 rows.

WORKING INSTRUCTIONS

Cast on a 17 st. chain and, beg. from the 4th ch. on the crochet hook, work as follows:

Row 1: 1 tr., * 2 chs., skip 2 base chains, 2 trs. *; rep from * to *.

Row 2: 4 chs., 2 trs. between the 2 trs. below, 1 ch., 3 trs. in the space of 2 chs., 3 chs., skip the next 2 trs., 1 double tr. in the next sp., 3 chs., skip the next 2 trs., 3 trs. in the next sp., 1 ch., between the last 2 trs. Work 2 trs., 1 ch. and 1 tr.

Row 3: 4 chs., 2 trs. in the space of the next 1 ch., 1 ch., skip the next 2 trs., 3 trs. in the space of the next 1 ch., 4 chs., skip the next 3 trs., 1 dc. in the 3 ch. loop before the double tr., 1 dc. in the double tr., 1 dc. in the loop after the double tr., 4 chs., skip the next 3 trs., 3 trs. in the space of the next 1 ch., 1 ch., skip the next 2 trs., in the 4 ch. loop work 2 trs., 1 ch. and 1 tr.

From Row 4 to 17: cont. following the chart.

From Row 18: work in filet net following the chart with squares bearing in mind the following:

o 1 empty square corresponds to: 1 tr. in the tr., 2 chs., skip 2 stitches, 1 tr. in the next tr.

o 2 or more empty squares correspond to: * 1 tr. in the tr., 2 chs., skip 2 stitches *, Rep. from * to *; end the last square with 1 tr. in the next tr.

o 1 full square corresponds to: 1 tr. in the tr., 1 tr. in each of the 2 sts. or next ch., 1 tr. in the next tr.

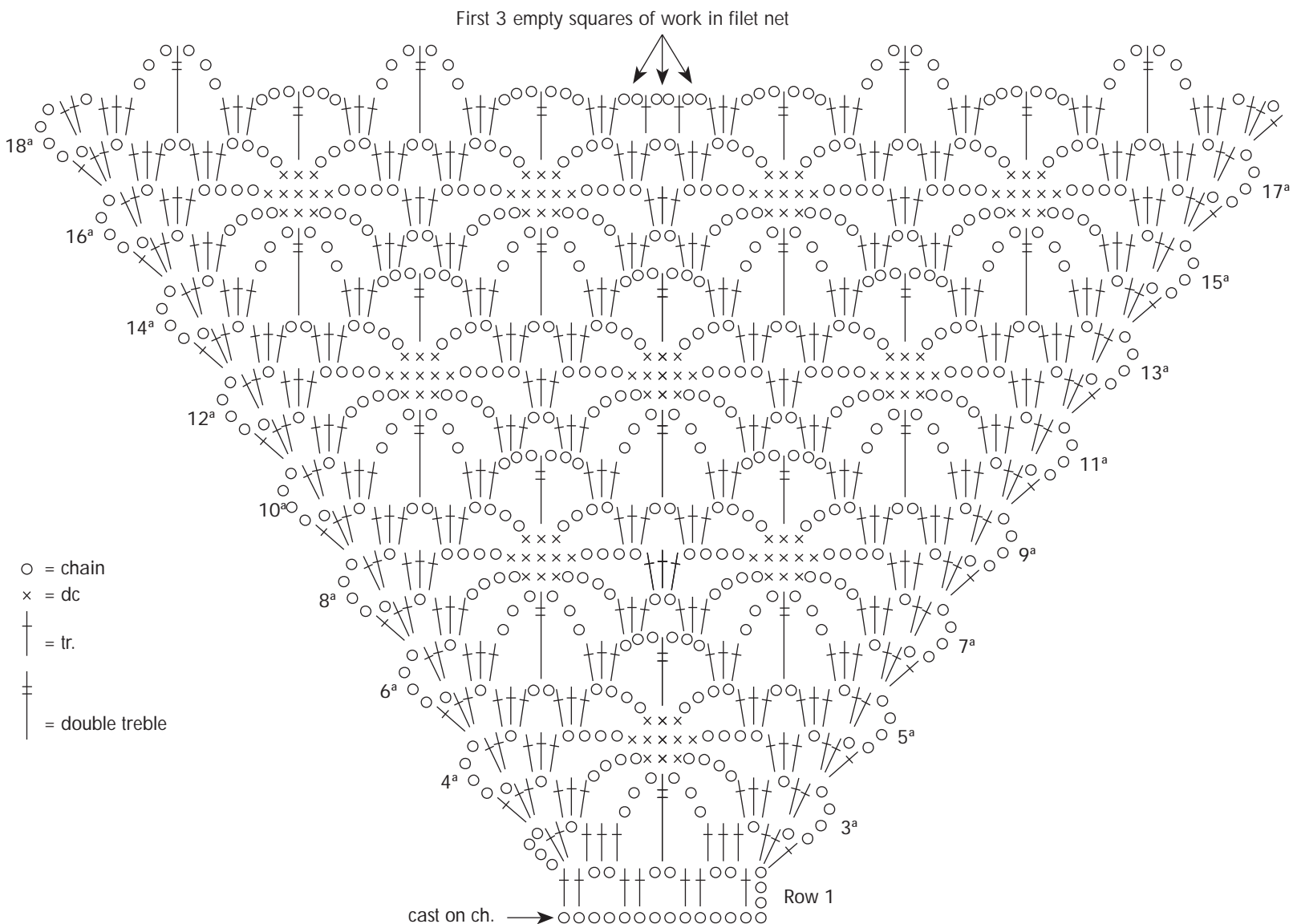
o 2 or more full squares correspond to: * 1 tr. in the tr., 1 tr. in each of the 2 sts. or next ch. *, Rep. from * to *; end the last square with 1 tr. in the next tr.

On sides of filet work cont. in two groups of spiders following the arrangement of the first 15 rows.

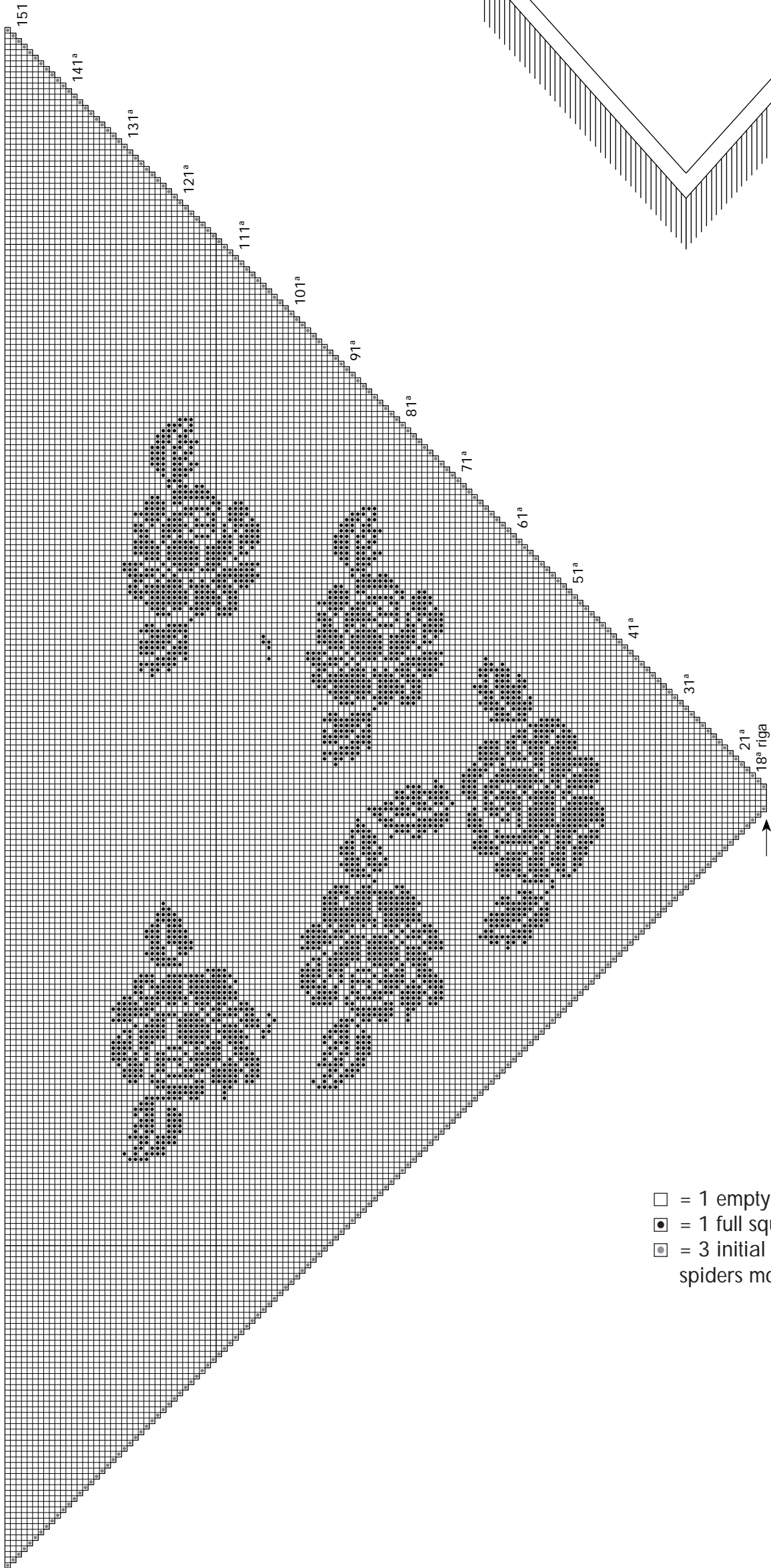
At the end of the chart, do not break off yarn.

MAKING UP AND FINISH

Work in all around the shawl 1 row in double crochet, then, break off and bind yarn. To make the fringes prepare threads of 50 cm., joining them in groups of threes, fold them in half and, with the crochet hook, join them along the slanted edges and knot: join a thread in every 2 border stitches. Level off the fringes with a pair of scissors.



Schema filet



- = 1 empty square
- = 1 full square
- ◼ = 3 initial sts. spiders motif

