



YARNS
ADRIAFIL YARNS

MATERIALS
450 g. **Button** yarn colour blue no. 67.
Knitting needles no. 4 and no. 4 1/2.
Tapestry needle with rounded tip.

SIZE: 44

PATTERN STITCHES

Knitted stitch
Squares with holes: work over all the stitches following the chart. Work in knitted stitch up to the position indicated on the chart to work

the square with holes, then, * turn the work and cont. only on the prev. sts.; at the end of the square, stand the work. Knit up the standing stitches, bind off the number of stitches indicated on the chart, cont. on the next sts. up to the position at which to work the next square *. Repeat from * to * to complete the first row of squares with holes. At the end of the row, knit up all the standing stitches, casting between the different sections the same number of stitches bound off, then, cont. in knitted stitch up to the position in which to work the 2nd row. Cont. in this way to the end of the chart.

SAMPLE

Work a 10 x 10 cm square with knitting needles no. 4 1/2 in knitted stitch. = 18 sts. and 23 rows.

WORKING INSTRUCTIONS

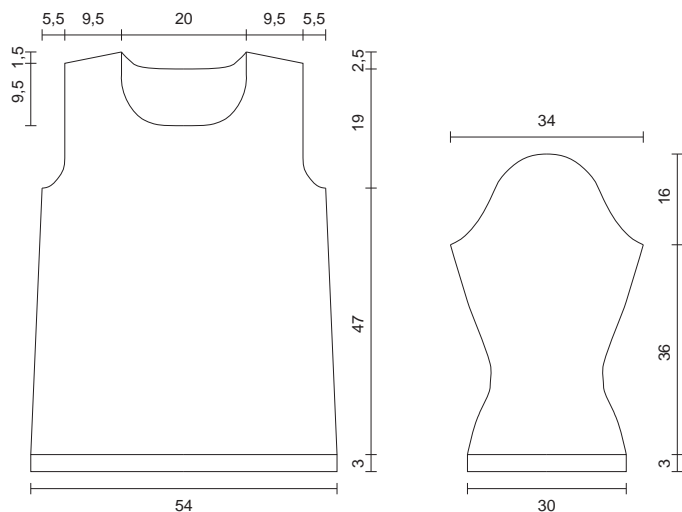
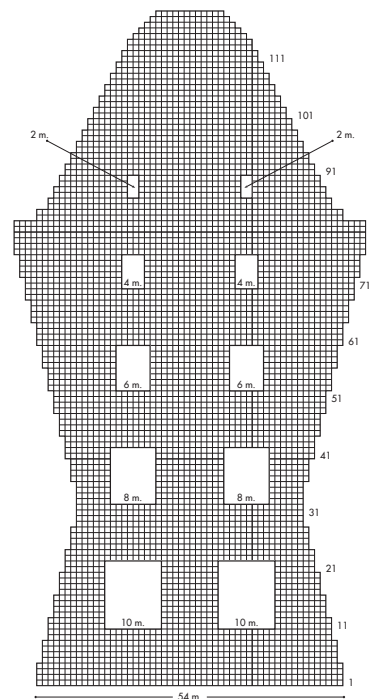
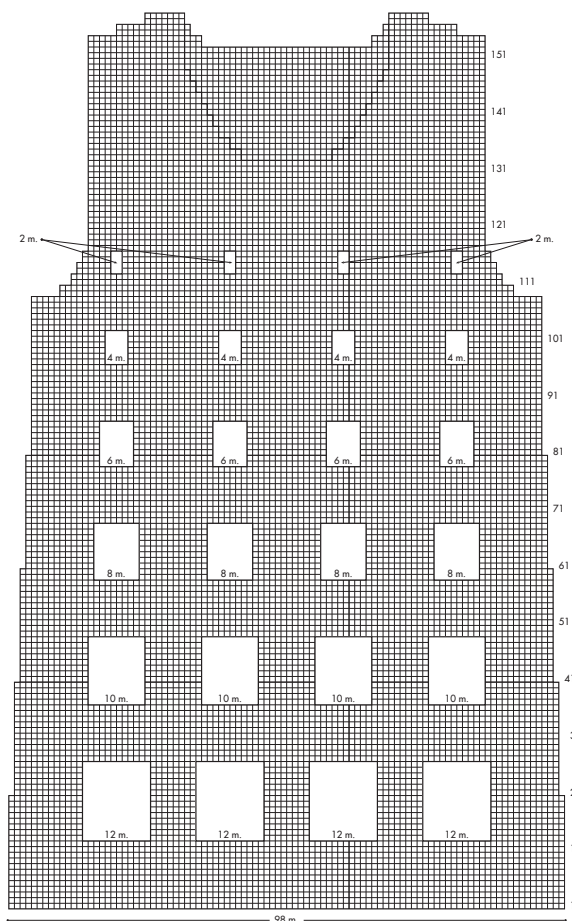
Back: Cast on 98 sts. with knitting needles no. 4 and work 10 rows in elastic rib, equal to 3 cm. Cont. with knitting needles no. 4 1/2 in knitted stitch. with the squares with holes following the chart. At the sides dec. 1 st. every 20 rows 4 times. When the work measures 47 from the edge, equal to 108 rows, to shape the armholes bind off 5 sts., then, every 2 rows, 2 sts., 1 st. 3 times. When the work measures 19 cm. from beg. of the arm sleeves, equal to 44 rows, to shape the neckline bind off 30 centre sts. and cont. working each part separately, bind off. again towards the centre, every 2 rows, 2 sts., 1 st. At the same time, after 2 rows from beg. of the neckline, to shape the shoulder slant, bind off at each side, every 2 rows, 5 sts. twice, 7 sts.

Front: Work to match Back until the work measures 57,5 cm. from the edge, equal to 132 rows. To shape the neckline, bind off 16 centre sts. and cont. working each part separately, bind off. again towards the centre, every 2 rows, 2 sts. twice, 1 st. 6 times. At the same time, when the work measures 67 cm. from the edge, equal to 154 rows, slant the shoulders to match the back.

Sleeves: Cast on 54 sts. with knitting needles no. 4 and work 10 rows in elastic rib, equal to 3 cm. Cont. with knitting needles no. 4 1/2 in knitted stitch. with squares with holes following the chart. At the sides dec. 1 st. every 4 rows 7 times. When the work measures 16 cm. from the edge, equal to 36 rows, increase at the sides 1 st. every 4 rows 11 times. When the work measures 36 cm. from the edge, equal to 82 rows, to shape the armholes bind off at each side 4 sts., then, every 2 rows, 2 sts., 1 st. 15 times; cont. dec. at the sides 1 st. every row 4 times. When the work measures 16 cm. from beg. of the arm sleeves, equal to 37 rows, bind off the rem. 12 sts.

MAKING UP AND FINISH

Sew a shoulder. With knitting needles no. 4 knit up 125 sts. around the neckline and work 6 rows in elastic rib. Graft stitches with the tapestry needle. Sew the other shoulder and the sides of the edge of the neck. Fit the Sleeves. Sew the sides and the sleeve seams.



□ = 1 maglia rasata
diritta
xx m. = numero di maglie
da intrecciare