

PAG. 5 CRU NECK TOP



YARNS
ADRIAFIL YARNS

MATERIALS
250 g. **Gem** yarn, colour bright yellow no. 71.
Knitting needles no. 4. Crochet hook no. 1.50.
Tapestry needle with rounded tip.

SIZE: 46

sts. and 18 rows.

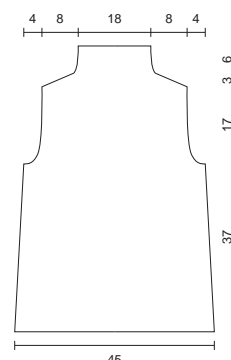
WORKING INSTRUCTIONS

Back: Cast on 104 sts. with knitting needles no. 4 and work in tassel st. decreasing at the sides 1 st. every 20 rows 3 times. When work measures 37 cm., equal to 66 rows, to shape the armholes bind off at each side 4 sts., then, every 2 rows, 3 sts., 2 sts., 1 St. When work measures, equal to 96 rows, to shape the shoulder slant, bind off at each side 6 sts. every 2 rows 3 times. Cont. over the rem. 42 sts. for 6 cm, equal to 10 rows, and bind off the stitches.

Front: Work to match back.

MAKING UP AND FINISH

Sew the shoulders, the sides of the neck and the sides. With Crochet hook no. 1.50 trim the armholes and the neck work 2 rows in sc. and 1 row in bobble st. .



PATTERN STITCHES

Tassel stitch: work over 6 sts. + 2 end sts.

Row 1: (back of the work) p/1, * 5 sts. worked in reverse, 5 sts. in 1 st. (= in the same st. work k/1. and p/1 twice and then k/1.) *. Repeat from * to * and end with p/1

Rows 2, 4, 8 and 10: purled

Rows 3 and 9: knitted

Row 5: work in knitted st. winding the yarn 3 times around the right hand knitting needle, for each stitch.

Row 6: work in knitted st. slipping the two extra threads wound on the previous row for each stitch.

Row 7: work like row 1.

Row 11: knit up from the 5th row.

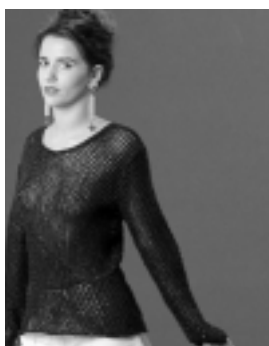
Single crochet (sc)

Bobble: 3 chs., 1 sc. in the 1st chain.

SAMPLE

Work a 10 x 10 cm. square with knitting needles no. 4 in tassel stitch = 23

PAG. 6 LONG SLEEVED PULLOVER WITH OPEN-WORK RIBBING



YARNS
ADRIAFIL YARNS

MATERIALS
400 g. Rowto **Cuba** colour blue no. 58
Knitting needles no. 3.
Tapestry needle with rounded tip.

SIZE: 40/42

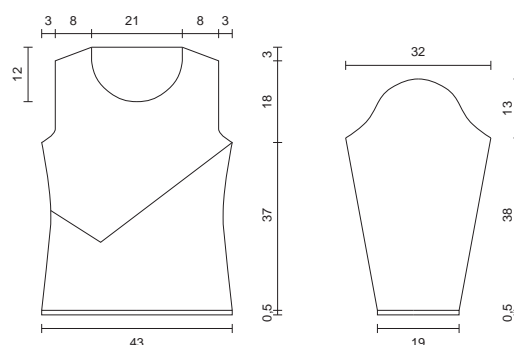
the work measures 37,5 cm., equal to 118 rows from the elastic rib, to shape the armholes bind off at each side 4 sts., 3 sts. after 2 rows. When the work measures 18 cm. from beg. of the arm sleeves, equal to 58 rows, to shape the shoulder slant, bind off at each side 4 sts. every 2 rows 5 times. Bind off the rem. 56 sts. for the neck.

Front: Work to match Back until the work measures 15,5 cm., equal to 48 rows from the elastic rib. To change the work cont. as follows: work the first 65 sts. in eyelet pattern cable st., 4 sts. in eyelet pattern "A", 35 sts. in eyelet pattern cable st.; cont. increasing the eyelet pattern st. "A" by 2 sts. every 2 rows rightwise and by 3 sts. every 2 rows leftwise, consequently decreasing the number of sts. worked in eyelet pattern cable st., until all the stitches are worked in eyelet pattern "A". At the same time, when the work measures 21,5 cm., equal to 66 rows from the elastic rib, increase at the sides 1 st. every 18 rows. 3 times (on the left of the work the last 2 inc. will be done with the new work). When the work measures 37,5 cm., equal to 118 rows from the elastic rib, shape the armholes to match the back. When the work measures 9 cm. from beg. of the arm sleeves, equal to 30 rows, to shape the neckline stand the 14 centre sts. and cont. working each part separately, standing towards the centre, every 2 rows, 5 sts., 4 sts., 3 sts. twice, 2 sts. twice, 1 st. twice. At the same time, when the work measures 18 cm. from beg. of the arm sleeves, equal to 58 rows, shape the shoulders to match the back.

Sleeves: Cast on 49 sts. with knitting needles no. 3 and work 2 rows in elastic rib, equal to 0,5 cm. Cont. working 24 sts. in eyelet pattern "A", 1 st. in knitted stitch., 24 sts. in eyelet pattern "B". At the sides increase 1 st. every 8 rows 15 times. When the work measures 38,5 cm., equal to 122 rows, to shape the armholes bind off at each side, every 2 rows, 3 sts., 2 sts. twice, 1 st. 8 times, 2 sts. 5 times, 1 st. 5 times. Bind off the rem. 19 sts.

MAKING UP AND FINISH

Sew a shoulder. With knitting needles no. 3 knit up 124 sts. around the neckline, including the standing stitches, and work 6 rows in elastic rib. Graft stitches with the tapestry needle. Sew the other shoulder and the sides of the edge of the neck. Fit the Sleeves. Sew the sides.



PATTERN STITCHES

Elastic rib
Knitted stitch

Open-work ribbing: work over 3 sts. + 2.

Row 1: k/1., * 1 yarn over, 1 slipped st. without working and knitting up purled sts., k 2, passing over the slipped st. on k 2 *. Repeat from * to * and end with k/1.

Row 2: purled

Row 3: knit up from row 1

Eyelet pattern stitch "A": work over an even number of stitches.

Row 1: knitted stitch

Row 2: p/1, * 1 yarn over, purl 2 together in back loop *. Repeat from * to * and end with p/1

Row 3: k/1., * slip 1, knit 1, pass slipped stitch over, 1 yarn over *. Repeat from * to * and end with k/1.

Row 4: knit up from Row 2

Eyelet pattern stitch "B": work over an even number of stitches.

Row 1: knitted stitch

Row 2: p/1, * 1 yarn over, purl 2 together *. Repeat from * to * and end with p/1

Row 3: k 2, * 1 yarn over, k. 2 together *. Repeat from * to *.

Row 4: p/2, * 1 yarn over, purl 2 together *. Repeat from * to *.

Row 5: k/1., * 1 yarn over, k. 2 together *. Repeat from * to * and end with k/1.

Row 6: knit up from row 1

SAMPLE

Work a 10 x 10 cm square with knitting needles no. 3 and with the different stitches = 26 sts. and 32 rows

WORKING INSTRUCTIONS

Back: Cast on 110 sts. with knitting needles no. 3 and work 2 rows in elastic rib, equal to 0,5 cm. Cont. in eyelet pattern ribbing dec. at the sides 1 st. every 12 rows. 3 times When the work measures 21,5 cm., equal to 66 rows from the elastic rib, increase at the sides 1 st. every 18 rows 3 times. When